



# **Environmental Modifications**

**Increasing Need &  
Potential Cost Savings**

# History of UCP of NYC'S Involvement with E-MODS

- **Recipients of funding from:**
  - NYC Mayor's Office for People with Disabilities (MOPD)- Project Open House  
**18 Years**
  - NYS Housing and Community Renewal (HCR)- Access to Home  
**9 Years**
  - OPWDD-Family Support Funding
  - Department of Health Balancing Incentive Program (BIP)- Innovation Fund  
**2015**

# Accessible (ac·ces·si·ble):

*Defined by Merriam-Webster*

Providing access; capable of being reached, easy to communicate or deal with;  
capable of being influenced; capable of being used or seen; capable of being understood or appreciated



# Need for E-mods

- According to a survey done by CIDNY in 2011 there are:
  - **889,219** Individuals with Disabilities residing in New York City
  - **535,840** of which have ambulatory difficulties

# Need for E-mods

- **32%** of people with disabilities are living in poverty (2013 Census)
- Difficulty affording modifications

# Barriers to Independent Living

For some,  
the stairs inside  
and outside may  
seem to be an  
insurmountable  
obstacle...



# What are Environmental Modifications (E-Mods)?

Internal or external physical adaptations to the home

- o Ensures health and safety of the individual
- o Allows for greater independence
- o Prevents unnecessary out of home placement

# Examples of E-Mods

- Wheelchair Ramps
- Stairlifts
- Wheelchair Lifts
- Roll-In Showers
- Walk-in tubs
- Grab bars
- Automatic Door Openers



# Department of Health (BIP)

## Balancing Incentive Program (2015-2016)

- \$556,000 Grant
- 39 Environmental Modifications
- Up to \$25,000 per modification
- Must be Medicaid eligible

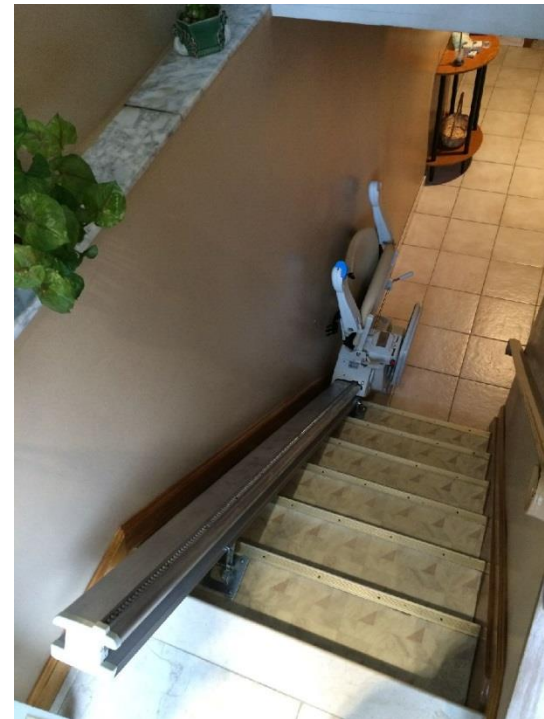
**Before**



**After**



- o Alice C.
- o Staten Island, New York
- o 10' Ramp
- o Referred by: Queens Center for Progress



- Michael M.
- Staten Island, New York
- Straight Run Stairlift
- Referred by: UCP of NYC-MSD



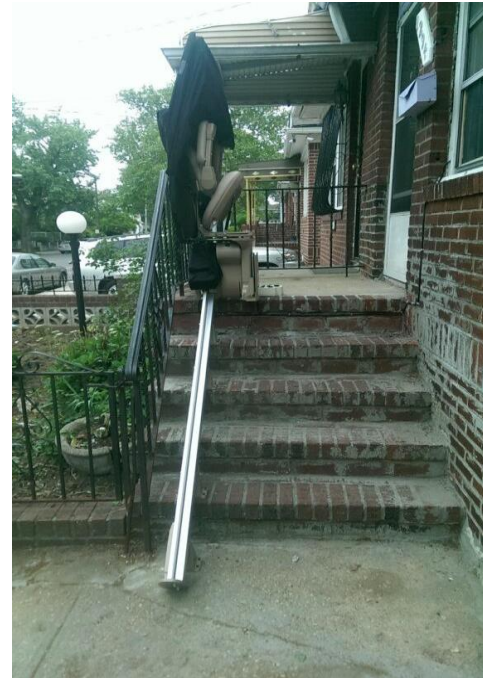
- Erin Y.
- Staten Island, New York
- Custom Curved Stairlift
- Referred by: Center for Family Support



**Before**



**After**





## BEFORE

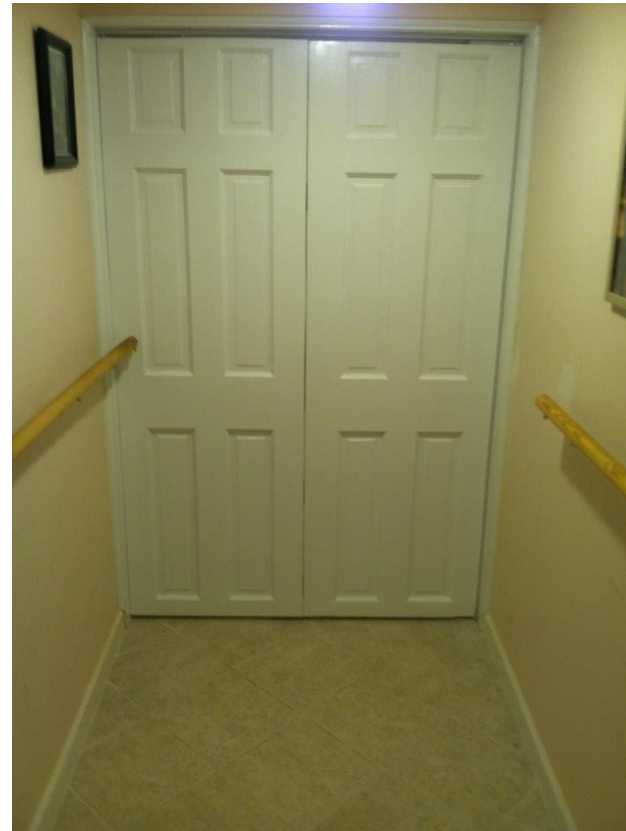
Lorenzo V.  
Queens, New York  
Vertical Platform Lift  
Referred by: ANIBIC





## AFTER

**Lorenzo V.  
Queens, New York  
Vertical Platform Lift  
Referred by: ANIBIC**



- Kristine C.
- Bathroom Modification
- Roll in shower, ADA toilet, tilt in shower, moveable shower head, ADA faucet
- Referred by: CIDNY





- Julio G.
- Brooklyn, New York
- Exterior Stairlift
- Referred by UCP of NYC In-home Respite



- Nishwani L.
- Accessible Bathroom
- Bronx, NY
- Referred by: UCP of NYC



- **Abraham A.**
- **Staten Island, New York**
- **Ramp with Rails**
- **Referred by: John Wynne of OPWDD**

## Frances Family: Vertical Platform Lift

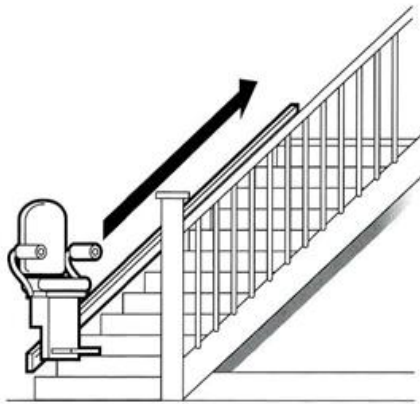




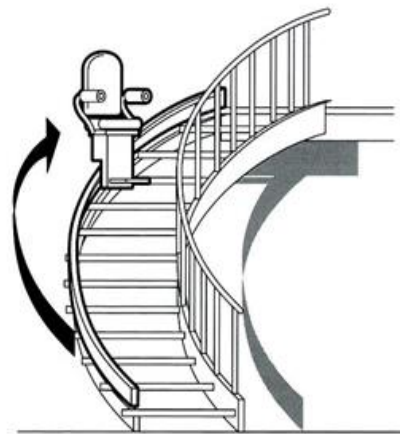
**Installing a VPL made it possible for Jaivun to safely enter and exit his house for the first time in his life**



# Cost of Modifications: INTERIOR STAIRLIFTS



*Straight stairs*



*Curves and spirals*



*Straight stairs with flat or sloped landing*

**Straight Stairlifts can cost \$2,300-\$3,000**  
**Curved can run up to \$9,000-\$13,000**

# Costs of Modifications:

## Accessible Bathroom

- Full scale bathroom modifications can cost between \$9,000 and \$15,000
- Smaller scale renovation such as:

*ADA sinks*

*ADA toilet*

*Cut out walk in tubs*

*Grab bars*

are cost effective alternatives to gut renovations

# Cost of Modification: Ceiling Track Lift

- Fewer caregivers required
- Conservation of space
- Increased safety
- Allows easiest option for positioning assistance for dependent
- \$5000-\$25,000





# Costs of Modifications: Vertical Platform Lifts



Exterior wheelchair lifts can cost between  
\$15,000-\$25,000

# Our Goal?

- Enable participants to return to or remain in their community
- Reduce number of hospital visits
- Create a safer environment
- Increase independence
- Increase quality of life
- Enhance caregiver's confidence

# WHO DO WE SERVE?

## Varies by Grant...

- Individuals with any qualifying health condition that limits access to their home or community
- Developmental Disabilities
- Mobility Impairments
- Vision Impairments/Hearing Impairments
- Medically Fragile
- Elderly

# PRIORITY

## Varies by Grant...

- At risk of out of home placement
- Currently in Nursing Home or Rehab Facility
- Substantial difficulties with ADL'S
- Elderly
- Living below federal poverty line

# Ways to fund E-mods



- **Access to Home** (ATH) New York State Division of Homes and Community Renewal program subsidizes home modifications for low income families facing accessibility issues



- **OPWDD** (E-Mods) for individuals who are waiver enrolled
- **OPWDD** (FSS Housing Assistance) for small scale modifications



- **Balancing Incentive Program** (BIP) Federal funds awarded to UCP targeting Medicaid eligible individuals with accessibility issues



- **Nursing Home Transition and Diversion** (NHTD) Provides E-mod services to New Yorkers 18+ years who are waiver enrolled



# ACCESS TO HOME 2015

- Recipients of ATH AND ATH Medicaid 2015 grant
- Additional \$300,000 towards 24 Modifications
- Only agency in NYC region to receive ATH grant this year!!!



# Cost Savings

- **\$137,067** Average cost of nursing home placement in NYC (DOH)
- **\$34,000** Average cost of LTSS in NYS (Kaiser Family Foundation)
- **\$22,000** Average cost of a major modification
- **\$100,000+** Potential savings of Medicaid State Funds!!!

# UCP OF NYC'S Environmental Modification Process

- Shortened Contractor Bidding Award Process by two months
- Decreased average projects costs by 60%
- Shortened length of time for Job Completion
- Increased family satisfaction with the program
- Shortened grant time frame



# Environment effects the well-being of the whole person

- ✓ Emergency preparedness
- ✓ Reduced anxiety
- ✓ Sense of control
- ✓ Keep community ties
- ✓ by remaining in home
- ✓ Reduce stress of caregiver





Accessibility is the  
difference  
between a life  
fulfilled and a life  
boxed in by  
obstacles.

*Together, we are  
creating a more  
accessible, better  
integrated world.*

It means  
everything.

