



RECREATION OPPORTUNITIES: (Contact the Referral and Information Center at (212) 780-4491). **City Teens Program:** Individuals aged between 12-21 who are diagnosed with ASD (Autistic Spectrum Disorder) and are NOT eligible for OPWDD services. Mostly open to teens from Brooklyn but can accommodate a few from other boroughs. Program meets Sundays during the school year in Union Square for fun adventures around the city. Please contact Sam Emsell at samuel.emsell@ahrcnyc.org **Overnight Weekend/Getaway Respite Programs (Mini Camps, Adult Hotel Respite, Kids and Teens Holiday Respite, and Bronx Escorted Vacations):** Available for independent travelers and individuals that are able to self-medicate and those who enjoy trips to upstate New York from Friday evening through Sunday afternoon to discover various local attractions and seasonal activities. All individuals interested in this program must be in the HCBS Waiver. No cost, transportation provided. Please Contact Roxana Ancher at roxana.ancher@ahrcnyc.org or Sam Emsell at samuel.emsell@ahrcnyc.org **Manhattan, Staten Island, Brooklyn and Queens Saturday Recreation and Socialization Programs for Children, Teens/Young Adults and Adults:** Operates Saturdays from October to May, 10 a.m. – 4 p.m. Transportation is provided, must be in the HCBS waiver. Current openings in both the children's program (ages 6 – 12 years) and adult program (18+). Please Contact Valerie Adolphe at valerie.adolphe@ahrcnyc.org **General Recreation Activities: Softball in Central Park, Brooklyn Basketball Program, Staten Island Restaurant Club, Bowling throughout NYC, Quarterly Dances, Super Saturday:** Available to individuals who lives in New York City and NOT eligible for OPWDD services. Please contact Sam Emsell at samuel.emsell@ahrcnyc.org for more information of days and time. **Afterschool in Queens, Manhattan, Bronx and Brooklyn:** (for children and teens, ages 6-21). Individual must be in the HCBS waiver and live in the borough of the program. Individuals interested in **Harlem-After School** are individuals aged between 12-21 who are diagnosed with ASD (Autistic Spectrum Disorder) and are NOT eligible for OPWDD services. Please contact Karen Cullen at karen.cullen@ahrcnyc.org

OVERNIGHT/EMERGENCY In-Home Hourly Respite Hourly Program: This type of Respite is a temporary care of an individual with intellectual and developmental disabilities provided on an emergency basis due to a family/caregiver situation of extreme urgency, such as the hospitalization of a family member or unexpected travel plans. The overnight/emergency respite services ensure that the person receiving supports is safe and his/her basic needs are met. Emergency respite is provided in individual's home. A caregiver must reside with the individual in the same household. An applying person should be OPWDD eligible. Services are provided to families residing in the boroughs of Queens and Manhattan. Contact Yulia Yaroshevskaya, Program Intake Supervisor at 212-780-4482. **IN-HOME RESPITE PROGRAM:** is designed to provide a relief for the caregiver. The in-home respite services ensure that the person receiving supports is safe and his/her basic needs are met. A caregiver must reside with the individual in the same household. The caregiver does not need to be present in the home during service provision hours. Services can be provided in the home or out in the community. Individual applying for services must be OPWDD waiver eligible. Waiting list for people ages 3 and over in 5 boroughs of NYC. Contact the Referral and Information Center at (212) 780-4491. **COMMUNITY HABILITATION:** CH is a goal oriented service designed to train and support individuals to increase their independence. Services can be provided in the home or out in the community and the caregiver does not need to be present in the home during service provision. Individual applying for services must have a Medicaid Service Coordinator and be OPWDD waiver eligible. We are open for people ages 3 and over in 5 boroughs of NYC. There is immediate opportunity for Manhattan and the Bronx. Contact the Referral and Information Center at (212) 780-4491.

EMPLOYMENT and BUSINESS SERVICES: TechnoStart: Program in S.I. for individuals with I/DD. 12 week pre-vocational training program. Program helps individuals 18 years and older to gain computer and office skills, and obtain certification in Microsoft Office Specialist. Job placement services and benefits assistance provided. Contact Mark Emsak or Anna Chakryan at 718-981-3452. **Pathway to Employment:** The Pathway to Employment program offers individuals already enrolled in a waiver service an opportunity to discover their employment interests and improve their skill set. Participants will experience 3-4 job roles in the community through volunteer sites, receive job readiness training and personalized vocational discovery throughout this 1 year service with the goal of transitioning to paid employment. Contact Mark Emsak or Candi Genovese at 718-981-3452. **Brooklyn Day Hab without walls:** Day Hab without walls program target towards employment. Some of the services and activities provided are: resume preparation workshops, interview preparation, personal hygiene skills, self-care, socialization skills, money management, mobility training, life skills training, reading and writing, anger management, relaxation techniques, proper nutrition, healthy exercise and recreational type activities. Additionally, individuals volunteer at different sites and participate in diverse community events. Contact Christopher Michael 212-895-3376. **Staten Island Day Hab without Walls:** Day Hab without walls program explores the world of work through daily activities out in the community. Some of the services and activities provided are: resume preparation workshops, interview preparation, personal hygiene skills, self-care, socialization skills, money management, mobility training, life skills training, reading and writing, anger management, relaxation techniques, proper nutrition, healthy exercise and recreational type activities. Additionally, individuals volunteer at different sites and participate in diverse community events. Contact Irina Brusilovski or Candi Genovese at 718-981-3452. **Senior Retirement Services:** Day Hab Without Walls program for individuals over age 55, must be a Bronx resident. Contact Ana Kuharik at 718 944-5099. **Bronx and Staten Island Day Hab Without Walls:** This program offers the opportunity for community activities including volunteering and social outings. The premise is to prepare people to move out of Day Hab and into employment. Contact Ana Kuharik, 718-944-5099 (Bronx) and Gina Gioe, 917-807-5142 (Staten Island). **Youth Careers Training Programs:** OSY Pre-Vocational training program for NYC residents with DD or LD and/or low income; 18-24 years old. 15 weeks of training combines classroom instruction with internship at major NYC institutions.

Upon successful completion, program enrollees will obtain nationally recognized CMI Certification in Janitorial. There are three cycles during the year. The program offers job placement and job supports after graduation. Integrated program great for developing relationships and preparing for employment. Brooklyn: Alla Gertsik, 212-895-3310; Bronx, Cristina or Yona, 718-944-5099, Staten Island, Anna Chakryan at 718-662-1432. **Staten Island Young Adult Internship Program:** DYCD- 14 weeks of a paid internship program for young adults from 16-24 years old, who are out of school and out of work. Internship opportunities include; clerical, retail, culinary and maintenance. 350 hours of paid internship followed by job placement. Call Anna Chakryan 718-662-1432 or Natalya Sarukhanova at 718-981-3452. **HIRE** - Supported Employment, placement in jobs dependent on applicant's skills and abilities. Brooklyn: Sofiya Nibelitskaya, 212-895-3325. Queens: Melissa Levin-Tormos 917-662-6496. Bronx: Wayne Thomas, 718-944-5099. Staten Island: Jaclyn Tocco (718) 981-3452. Manhattan: Isis Clark - 212-634-8673. **Job Connection Center-Psycho-social Clubhouse (Brooklyn):** A small innovative program, with highly trained and experienced staff, specifically designed to support individuals who are dually diagnosed (IDD/MI) in obtaining and maintaining a job. Call 212-895-3370.

ADULT DAY SERVICES: A variety of programs where individuals become valued community members in different ways, including volunteering, shopping, visiting local attractions, etc. The programs offer many life enhancing experiences in the arts, travel training, and vocational services. There are also programs that operate solely in the community, and in higher education programs in cooperation with local colleges. For more details, call Central Intake at 212-780-4491.

Emergency Reimbursement Program (Family Support Service): The Emergency Program provides reimbursement up to \$1,000 for people who have developmental disabilities and need emergency support. The requests may be for goods and/or short term services that will support the person during the time of an emergency. A wide variety of goods and services will be considered, including: costs to replace items lost in a fire, mattress replacement after bed bug infestation, utility suspensions, eviction risks and Emergency Respite Care. Emergency Respite Care is temporary care of a person with a developmental disability provided on an emergency basis due to a family situation of extreme urgency, such as, but not limited to the hospitalization of a family member, unexpected emergency travel plans or relief needed for the caregiver due to special circumstances. Criteria for program enrollment: resides with family in Brooklyn or Queens, OPWDD eligibility. For more information call 212-895-3478. **Nicosia Family Reimbursement:** The service provides the opportunity to be reimbursed for purchased services and goods, and the possibility of purchasing services and goods that are not funded through any other sources. The goods and services have been deemed appropriate to meet the needs of the person being served. Criteria for grant: OPWDD eligibility, resides with family, vacancies for those living in Manhattan, Brooklyn, Queens or Staten Island. For more information call 212-895-3478. **Intensive Behavioral Services** Program in the Bronx which provides Intensive Behavioral Services for individuals who live in non-certified or Family Care Homes and present with substantial challenging behaviors that put them at risk of placement in a more restrictive living environment. The service involves in home behavior management evaluation and treatment by psychologists who specialize in Functional Behavioral Assessment and Intervention. For information about the application or questions, contact Lisa Adorno at 718-643-2566. **Queens Intensive Parent Training:** This family support program serves ID/DD parents who reside in Queens, who are living in the community and raising their children. This service provides education, parent training, intensive case management, and advocacy to help the parent improve their parenting skills and help keep children in the home with the parent(s). Criteria: reside in Queens County; parent must be ID/DD. Call Annette Spallino 212-780-2592. **Non-Medicaid Service Coordination:** The service includes assisting families through the Medicaid application process, information and referral services, outreach, parent networking and service access assistance for individuals and their families. Service Coordinator is able to make connections with diagnostic, residential, habilitative, educational, vocational, medical and recreational services. In addition, the Service Coordinator can assist with accessing benefits and entitlements, such as Medicaid and SSI. Criteria for program enrollment: resides with family, vacancies for Manhattan, Queens, Brooklyn and Staten Island. No Medicaid required. For further information please call 212-895-3478. **Article 16 Clinic Services:** Ongoing vacancies in Manhattan for psychological and psychosocial evaluations, individual and group counseling and nutrition services. Ongoing vacancies in the Bronx for individual and group counseling, psychological, and psychosocial evaluations at the 2488 Grand Concourse Clinic. Services are available in English, Spanish, and Mandarin. Anyone interested in these programs should contact Clara Cordero at (212) 780-2387. **REHAB Services:** Immediate openings for physical, speech, and occupational therapy. Call Robin Phillips at (212) 780-2762 for more information on how to request services. **FREE Psychological/Psychosocial Evaluations:** AHRC Article 16 Clinic is offering Psychological Evaluations and Psychosocial Evaluations for individuals who are developmentally disabled that do not have Medicaid and are residents of the five boroughs of NYC. Services are available in English, Spanish, and Mandarin. For more information or to make a referral call AHRC Central Intake at 212-780-4491.

OVERNIGHT RESPITE (out of home – NOT EMERGENCY; emergency above): Guests must be age 8 and up, and must be weight bearing if non-ambulatory. Cannot be seriously medically involved where extra nursing staff would be necessary. Staten Island is the only wheelchair accessible respite facilities. *Families should apply for respite before the need arises; the application has to be approved beforehand.* Contact the Referral and Information Center at (212) 780-4491.

RESIDENTIAL: Anticipated and immediate openings in all boroughs. Details vary depending on the setting. **If you have any questions please contact: 212-780-4457. If you would like to make a referral, please contact 212-780-4491.**

Cc: Department Heads - A. Spallino L. Martinez H. Amorini K. Kelly E. McNutt K. Isenberg P. Minkoff S. Krakauer B. Nugent E. Weber S. Dodson J. Agrawal chrisgreif@yahoo.com contactfssac@aol.com contactsiddc@siddc.org

For information about connecting to YAI services, go to yai.org/link
or call us at 212.273.6182 - age range and eligibility requirements vary

BROOKLYN

Ballet Yoga Group for Children on the Autism Spectrum
BCAP Weekend Recreation Program
Community Habilitation
Saturday Recreation Program
Emergency Respite Reimbursement
Friday Night Social
In-Home Behavior Management
Parent Training: Parents with Special Needs
Social Skills Group for Children on the Autism Spectrum

QUEENS

Afterschool Program
Community Habilitation
Crisis Intervention
Day Habilitation
Emergency Respite Reimbursement
Non Medicaid Skills Training
Overnight Respite
Parent Training: Sexuality
Parent Training: Parents with Special Needs

BRONX

Adult Recreation
Club Fun
Community Habilitation
Day Habilitation
In-Home Respite

MANHATTAN

Adult Recreation
Community Habilitation
Crisis Intervention
Day Habilitation
Emergency Respite Reimbursement
Family Reimbursement
Holiday Respite
In-Home Respite
Parent Training: Sexuality
Parent Training: Parents with Special Needs
Social Skills for Children with Autism
You and I: Social and Networking Skills

MULTI REGION

Free Education Workshops: For people with disabilities, caregivers and professionals
Independent Living Program
Leisure Trax
NYSTART: Crisis Prevention and Response for People with I/DD (212.273.6300) - M, Bx, Qns
Premier HealthCare: Internal Medicine, Pediatrics, Dental and Ophthalmology
Skills Building: Transition to Independence for Young Adults on the Autism Spectrum
Supported Employment Services
Manhattan Star Academy: Private School
Resources and Supports Workshop: Learn about the I/DD System and Services

YAI and its network agencies also provide services in Long Island, Rockland, Westchester and New Jersey

Visit yai.org for more information

Para español favor de ver el reverso

Summer 2018

Workshops take place at:
460 W 34th St, 11th Fl,
New York, NY 10001

10am-12pm

No children please

Free Education Workshops

For people with
disabilities, caregivers,
and professionals

MAY

Thursday, May 31st

**Special Education: Know Your Rights
So You Understand How to be a
Better Advocate for Your Child!**

Paola Martinez-Boone, MSW, Senior Advocate,
New York Lawyers for the Public Interest

JUNE

Thursday, June 7th

**Demystifying Person Centered
Thinking and Personal Outcome
Measures**

Lana Small, MSW, Sr. Coordinator, Community
and Family Services &

Anna Sheehy, LMSW, Director of Content
Development, YAI

Tuesday, June 12th

**Supporting a Person with Autism:
Positive Strategies to Use at Home**

Tracy Kernan, LCSW, Director of Information
and Outreach, YAI

Thursday, June 28th

NY START: What You Need to Know

Cheryl Karan, LMSW, Director, NY START,
Region 4, Tri-Borough

JULY

Thursday, July 12th

Self Direction 101

Michelle Lang, LCSW, &

Nicole Riccio, Senior Intake Specialist, YAI LINK

Tuesday, July 24th

**Top 10 Developmental Disability
Resources**

Michelle Lang, LCSW, &

Emily Gerner, LMSW, Senior Intake Specialist,
YAI LINK

AUGUST

Thursday, August 9th

Introduction to Mindfulness

Emily Gerner, LMSW, Senior Intake Specialist &

Nicole Riccio, Senior Intake Specialist, YAI LINK

Registration is required

www.yai.org/fews

or call ► **YAI LINK** 212.273.6182

See the reverse side for English groups

Verano 2018

Los talleres tienen
lugar en:

460 W 34th St, 11th Fl,
New York, NY 10001

10am-12pm

No niños por favor

Talleres Educativos Gratuitos

Para personas con
discapacidades, cuidadores
y profesionales

JUNIO

Miércoles 6 de junio

Mindfulness: Explore lo que es
Mindfulness y como aplicarlo a su
vida diaria

Dilia Mieses, Parent, Mindfulness Skills
Trainer

Jueves 14 de junio

Navegando el Sistema de Educación
Especial: Sus derechos y deberes

Paola Martinez-Boone, MSW, Senior
Advocate, New York Lawyers for the Public
Interest

JULIO

Jueves 12 de julio

Alzheimer y Problemas de la
Memoria en la Comunidad Latina

Licet Valois, LMSW, MPS, Program Manager,
Alzheimer's Association

Miércoles 25 de julio

Entendiendo la Planificación
Centrada en la Persona (POMs)

Sandra Ortiz, Assistant Coordinator, Training
Department, YAI

AGOSTO

Miércoles 22 de agosto

Transición a la Vida Adulta

Mara Henriquez, Assistant Coordinator, YAI
LINK

Necesita registrarse:
visite la página web yai.org/fews
o llame a ▶ YAI LINK 212.273.6412



Group training for parents/
caregivers of individuals with
developmental disabilities.

Project GROW teaches specific behavioral techniques to improve
communication and promote positive family interactions.
Peer support is also provided.

Registration and OPWDD eligibility required.
For more information call **212.273.6259**

Behavior Management

Manhattan: Thursdays, 9:30am-12:30pm

460 W. 34th Street, NY, NY 10001, 11th Floor

7/19- Session 1: Family Roles and Structure

Identify different parenting styles and family structures.

7/26- Session 2: Analyzing Behavior (ABC)

Understanding the behavior is necessary when attempting to change a behavioral pattern.

8/02- Session 3: The Power of Attention

Attention is a powerful tool to encourage appropriate behaviors.

8/09- Session 4: The Truth About Consequences

Setting limits and positive communication can encourage anyone to make better choices.

8/16- Session 5: Troubleshooting

Review of techniques and explore solutions to challenging behaviors.

8/30- Session 6: Caring for the Caregiver

Discover & practice techniques to manage your own mental health and wellness

-----Contact Elizabeth Asen at Elizabeth.Asen@yai.org-----

Registration and OPWDD eligibility required.

Shoulder to Shoulder

Training Group for Male Caregivers of Individuals with Developmental Disabilities

Manhattan: Tuesdays, 5-8pm

460 W. 34th Street, NY, NY 10001, 11th Floor

7/31- Session 1: Family Roles and Structure

Identify different parenting styles and family structures.

8/7- Session 2: Analyzing Behavior (ABC)

Understanding the behavior is necessary when attempting to change a behavioral pattern.

8/14- Session 3: The Power of Attention

Attention is a powerful tool to encourage appropriate behaviors.

8/21- Session 4: The Truth About Consequences

Setting limits and positive communication can encourage anyone to make better choices.

8/28- Session 5: Troubleshooting

Review of techniques and explore solutions to challenging behaviors.

9/4- Session 6: Caring for the Caregiver & Wrap Up Session

Discover & practice techniques to manage your own mental health and wellness

-----**Contact Elizabeth Asen at Elizabeth.Asen@yai.org**-----



Transition to Independence

For young adults, ages 17 - 21 on the autism spectrum.

Yoga & Mindfulness

Engage in calming physical and mental activities that promote movement, relaxation, self-awareness, stress reduction and socialization.

Life Skills

Develop and enhance life skills that focus on judgement, decision making, risk-taking, problem-solving and self-advocacy. Group topics include money management, community safety, self-care, relationships, and more!

Kitchen Skills

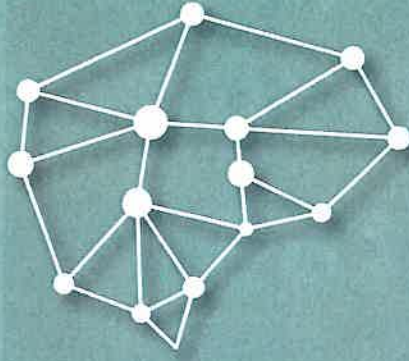
This course introduces cooking fundamentals like measuring, safety, and knife skills that are necessary in being able to prepare meals independently.

Groups available in the late afternoon and evening

For more information, please call:

YAI LINK at [212.273.6182](tel:212.273.6182) or email link@yai.org

Must meet NYC Department of Health and Mental Hygiene program criteria.



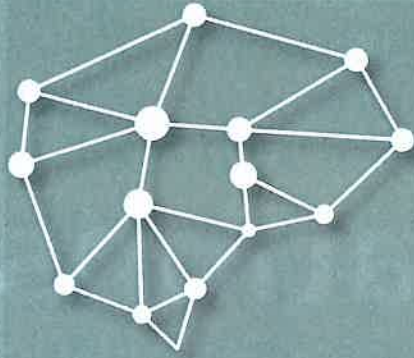
Free Evaluations

Free Psychological, Psychosocial and
Autism Assessments for Brooklyn,
Queens, and Manhattan residents*

*Eligibility criteria varies by borough.
Applicants must be *ineligible* for Medicaid.

For more information, contact YAI LINK
at **212.273.6182** or **link@yai.org**

*Funding provided by the NYC Department of Health and Mental Hygiene
and the NYS Office for People with Developmental Disabilities*



Evaluaciones Gratuitas

Evaluaciones psicológicas,
psicosociales y de autismo gratuitas
para residentes de los condados de
Brooklyn, Queens y Manhattan*

*El criterio de elegibilidad varía de acuerdo al condado.

Para más información, pónganse en contacto con
YAI LINK al **212.273.6182** o link@yai.org

*Financiado a través de NYC Department of Health and Mental Hygiene
y NYS Office for People with Developmental Disabilities*

Para grupos en español favor de ver el reverso



Seeing beyond disability.



advocacy

RESOURCE CENTER

Summer 2018

RESOURCES AND SUPPORTS:

Navigating the System for People with Developmental Disabilities

Learn About:

- Eligibility and access to services through NYS Office for People with Developmental Disabilities (OPWDD)

Morning Workshops (10am-12pm)

Wednesday, June 27th

Wednesday, July 11th

Wednesday, August 29th

Evening Workshops (6pm-8pm)

Wednesday, June 20th

Wednesday, August 1st

Unable to make it in person? You can call our:

Phone-In Workshop (12pm-1pm)

Wednesday, July 18th

Wednesday, August 15th

Register online for access details.

Register at: yai.org/resourcesandsupports

(Walk-ins also welcome)

460 W. 34TH St, 11TH Fl, New York

YAI LINK 212.273.6182 or link@yai.org

(Workshops are open to people with I/DD, families, caregivers and professionals)

Supported in part by a generous grant from The Taft Foundation



Viendo más allá
de la discapacidad.

RECURSOS Y APOYOS:

Navegando el Sistema para Personas con Discapacidades del Desarrollo

Infórmese sobre:

- Elegibilidad y acceso a servicios a través de la Oficina para Personas con Discapacidades del Desarrollo (OPWDD por sus siglas en inglés)

Miércoles 20 de junio 10am-12pm

Miércoles 18 de julio 10am-12pm

Miércoles 5 de septiembre 10am-12pm

Registrarse en:

yai.org/resourcesandsupports

(Puede acudir sin previa registración)

460 W. 34TH Street, 11TH Floor, New York

YAI LINK 212.273.6412 o link@yai.org

(Talleres abiertos a individuos, familias,
proveedores de cuidado y profesionales)

Sesiones financiadas en parte con el
generoso aporte de la Fundación TAFT

CURRENT PROGRAM OPENINGS



Call (718) 728-8476 for inquiries

JUNE 2018

QUEENS

1. Early Intervention (In-Home): Rhodie Volpe ext. 1512
2. Early Intervention Service Coordination: Ceres Joy Respicio ext 1252
3. Early Intervention (Center Based) : Joe Traegler 1521
4. Early Intervention Evaluations: Rhodie Volpe ext. 1512
5. SEIT: Rhodie Volpe ext. 1512
6. SETSS: Rhodie Volpe ext. 1512
7. Day Habilitation: Farzana Karim ext. 1233
8. Social Skills Group – High Functioning Autism: Dita DeSena ext.1418
9. Parent Training: Babina Chhetry ext. 1015
10. CPSE Evaluations: Rhodie Volpe ext. 1512

11. Evaluations for individuals without Medicaid (Psychological/Psychosocial): Rhodie Volpe ext. 1512
12. Preschool Centerbased Openings: Larisa Muratov ext. 1500
13. Supplemental Day Hab: Johnny Nunez ext. 1222
14. Non-Medicaid Service Coordination: Andrew Toscano ext. 1268
15. Self Direction: Broker Services Jacqueline del Orbe ext.1229
16. Day School: Larisa Muratov ext. 1513
17. Respite: Johnny Nunez ext. 1222
18. Parent Support Group: Madelyn Wolfen ext. 1519

BROOKLYN

1. Early Intervention (In-Home) contact: Rhodie Volpe ext. 1512
2. Early Intervention Service Coordination: Ceres Joy Respicio ext 1252
3. Early Intervention Evaluations: Rhodie Volpe ext. 1512
4. SEIT: Rhodie Volpe ext. 1512
5. SETSS: Rhodie Volpe ext. 1512
6. Non-Medicaid Service Coordination: Andrew Toscano ext. 1268

7. CPSE Evaluations: Rhodie Volpe ext. 1512
8. Preschool Centerbased Openings: Larisa Muratov ext. 1500
9. Housing Advocacy: Andrew Toscano ext. 1268
10. Self Direction: Broker Services Jacqueline del Orbe ext.1229
11. Respite: Johnny Nunez ext. 1222

THE BRONX

BRONX

1. Day School: Larisa Muratov ext. 1513
2. SEIT: Rhodie Volpe ext. 1512
3. SETSS: Rhodie Volpe ext. 1512
4. Early Intervention (In-Home) : Rhodie Volpe ext. 1512
5. Early Intervention Service Coordination: Ceres Joy Respicio ext 1252
6. Early Intervention Evaluations: Rhodie Volpe ext. 1512

7. CPSE Evaluations: Rhodie Volpe ext. 1512
8. Day Habilitation: Farzana Karim ext. 1233
9. Respite: Johnny Nunez ext. 1222
10. After School Program - Supplemental Day Hab: Johnny Nunez ext. 1222
11. Self Direction: Broker Services Jacqueline del Orbe ext.1229

MANHATTAN

MANHATTAN

1. Social Skills Group - High Functioning Autism: Rocio Chavez ext.1414
2. Parent Support Group: Annie Washington ext. 1219
3. Early Intervention (In-Home): Rhodie Volpe ext. 1512
4. Early Intervention Service Coordination: Ceres Joy Respicio ext. 1252
5. Early Intervention Evaluations: Rhodie Volpe ext. 1512
6. SEIT contact: Rhodie Volpe ext. 1512
7. Family Reimbursement (Camp): Annie Washington ext. 1219

8. Respite: Johnny Nunez ext. 1222
9. SETSS: Rhodie Volpe ext. 1512
10. CPSE Evaluations: Rhodie Volpe ext. 1512
11. Preschool Centerbased Openings: Larisa Muratov ext. 1500
12. Day Habilitation: Farzana Karim ext. 1233
13. After School Program - Waiver Respite: Johnny Nunez ext. 1222
14. Self Direction: Broker Services Jacqueline del Orbe ext.1229

Long Island

LONG ISLAND

1. Sibling/Parent Support Group and Parent Training: Joan Moore ext. 1948
2. Day Habilitation: Farzana Karim ext. 1233
3. SEIT (Nassau only): Rhodie Volpe ext. 1512

4. Self Direction: Broker Services Jacqueline del Orbe ext.1229
5. Respite: Johnny Nunez ext. 1222

STATEN ISLAND

STATEN ISLAND

1. Self Direction: Broker Services Jacqueline del Orbe ext.1229

Westchester County

WESTCHESTER

1. Self Direction: Broker Services Jacqueline del Orbe ext.1229



PARTNERS
HEALTH PLAN

PHP is about helping
people with intellectual &
developmental disabilities.

PHP is about helping you get
your support and services.

PHP is about teamwork that
makes good care better.

PHP is designed for you,
and is built to last.

phpcares.org



BUSINESS REPLY MAIL
FIRST-CLASS MAIL PERMIT NO. 6168 NEW YORK, NY

POSTAGE WILL BE PAID BY ADDRESSEE

PARTNERS HEALTH PLAN
2ND FLOOR
655 3RD AVENUE
NEW YORK NY 10164-4520

NO POSTAGE
NECESSARY
IF MAILED
IN THE
UNITED STATES



PARTNERS
HEALTH PLAN

WELCOME
TO BETTER



PARTNERS
HEALTH PLAN

Annrose Bacani
MARKETING REPRESENTATIVE

abacani@phpcares.org
C: 917-576-3475

655 Third Avenue, 2nd Floor
New York, NY 10017

The benefit information in this document is a brief summary, not a complete description of benefits. For more information, call Partners Health Plan Participant Services or read the Partners Health Plan Participant Handbook. Limitations and restrictions may apply. Benefits may change on January 1 of each year.

Partners Health Plan is a managed care plan that contracts with Medicare and the New York State Department of Health (Medicaid) to provide benefits to Participants through the Fully Integrated Duals Advantage for Individuals with Intellectual and Developmental Disabilities (FIDA-IDD) Demonstration.

H9869_2018_16749_PHP_FIDAIDD_Trifold Brochure



This is where people with challenges get the support they need and deserve.

A group of leaders in supporting people with intellectual and developmental disabilities worked together to shape a managed care plan that is designed for you and built to last.



We support you in living the life you choose.

What that means is when there is something you want to do – participate in an activity or play a sport, start a hobby or make a friend – we'll help make it happen.



We build a system of care around you.

When you have more options you have more pathways to the life you dream of. That's what you can expect with your own two-person team: double the support.



More transportation options, less waiting time, and other good news.

When a life-changing piece of medical equipment is needed, we streamline the process. There is a reason you have your own support team. It means someone is working to get rid of hassles and make access to the things you need easier. It's that simple.

Yes! I want to know more about Partners Health Plan

Fill the following and place completed form in mail or call us at:
1-855-747-5483 / TTY 711
8am-8pm, 7 days a week

Name: _____

Address: _____

Apt. _____

City: _____

State: _____

Zip: _____

Telephone (our representative may call): _____

Marketing Representative's Name: _____

You can also enroll today!

Call New York Medicaid Choice at:
1-844-343-2433 / TTY 1-888-329-1541

Monday - Friday
8:30 AM to 8:00 PM

Saturday
10:00 AM to 6:00 PM

To learn more about our programs or to be matched with a trained Support Parent in our network contact the office in your region, or complete the form below and mail it to the office that serves your county.

Name: _____

Address: _____

City: _____ State: New York Zip: _____

Home Phone: _____ Work/Cell Phone: _____

Email Address: _____ County: _____

Individual with Special Need(s): _____ Age: _____

Comments: _____

PARENT TO PARENT OF NYS brings together family caregivers of those with developmental disabilities or special health care needs. Being a part of this network helps caregivers learn to make better choices.

By finding support in each other, caregivers feel less alone and find hope.

- Receive training and join our network of volunteer Support Parents.
- Find out about programs and services that will assist your family.
- Learn skills that will improve parent-professional partnerships.
- Visit our website for regional news, announcements, and event listings.
- Join a regional e-group to receive updates.
- Contact our staff members to schedule a presentation. Our staff members, as parents of individuals with special needs, can share with you what they have learned along the way.

DONATE TO PARENT TO PARENT

PARENT TO PARENT OF NYS is a 501(c)(3) nonprofit organization. Your contribution is tax-deductible to the extent allowed by law.

Please send donations to:
Parent to Parent of NYS
PO Box 9212
Schenectady, NY 12309



Connecting and supporting families of individuals with special needs



www.ptopnys.org



www.facebook.com/ParentToParentNYS



Follow us: @PtoPofNYS

PARENT TO PARENT OF NYS is funded by NYS Office for People with Developmental Disabilities (OPWDD).

**Contact a regional office of
PARENT TO PARENT OF NYS:**

CAPITAL REGION

Albany, Columbia, Dutchess, Fulton, Greene,
Montgomery, Putnam, Rensselaer,
Saratoga, Schenectady, Schoharie,
Ulster, Warren & Washington counties
500 Balltown Road
Schenectady, NY 12304
1-800-305-8817, 518-381-4350

FINGER LAKES

Livingston, Monroe, Ontario,
Yates & Wayne counties
c/o FL DDRO Office
620 Westfall Road
Room 114
Rochester, NY 14620
585-424-7211

HUDSON VALLEY

Orange, Rockland, Sullivan
& Westchester counties
WIHD / Cedarwood Hall, Room A106
Valhalla, NY 10595
1-800-305-8816, 914-493-2635

LONG ISLAND

Nassau & Suffolk counties
415-A Oser Avenue
Hauppauge, NY 11788
1-800-559-1729, 631-434-6196

NORTH CENTRAL NY

Cayuga, Cortland, Herkimer,
Lewis, Madison, Oneida,
Onondaga & Oswego counties
Currently served by South Central

NORTH COUNTRY

Clinton, Essex, Franklin, Hamilton,
Jefferson & St. Lawrence counties
Currently served by Capital District
1-800-305-8817, 518-381-4350
and assisted by Canton Office
315-379-1538

SOUTH CENTRAL NY

Broome, Chenango, Delaware,
Otsego, Tioga & Tompkins counties
249 Glenwood Road, Room 3C33
Binghamton, NY 13905
607-240-4574

SOUTHERN TIER

Chemung, Schuyler, Seneca
& Steuben counties
PO Box 205
210-12th Street #210
Watkins Glen, NY 14891
1-800-971-1588, 607-535-2802

WESTERN NY

Allegany, Cattaraugus, Chautauqua, Erie,
Genesee, Niagara,
Orleans & Wyoming counties
1200 East & West Road
Building 16, Room 1-140
West Seneca, NY 14224
1-800-305-8813, 716-675-0239

Serving the Five Boroughs

NEW YORK CITY

c/o NYS OPWDD
25 Beaver Street, 4th Floor
New York, NY 10004-2310
1-800-405-8818
1-212-741-5545

STATEN ISLAND

c/o IBR
1050 Forest Hill Road, Room #108
Staten Island, NY 10314
1-800-866-1068, 718-494-3462



info@ptopnys.org

STATEWIDE OFFICE

PARENT TO PARENT OF NYS
Michele Juda, Executive Director
PO Box 9212
Schenectady, NY 12309
1-800-305-8817, 518-381-4350

**PARENT TO PARENT OF NYS
offices provide:**

Support: Through the Parent to Parent Matching Program, we help family caregivers connect one-to-one with someone who has "been there" as a caregiver of a child with the same type of disability, chronic illness, or health care concern.

Information & Referral: We help family caregivers find answers to general questions or information on a specific disability or health care need. We also can direct you to those who provide services, such as finding help to locate and pay for health care, equipment, or transportation needs.

Training: We offer training, such as using a Health Care Notebook or an Education Records Organizer, and Understanding Medicaid Service Coordination.

Fact Sheets and Health Care Notebooks are available from PARENT TO PARENT OF NYS offices, or may be downloaded by visiting the organization's website, www.ptopnys.org.

PARENT TO PARENT OF NYS is

- An alliance member of Parent to Parent USA
- The state affiliate of Family Voices National
- New York's Family-to-Family Health Information Center

Workshops for all parents, professionals, and caregivers. No children please.

SPECIAL EDUCATION MEDIATION

Thursday, July 12th, 2018 **80 West End Avenue, New York, NY 10023 - Room 124** **Time: 10am-12pm**
Do you want to change your child's IEP? Do you need to add services to the IEP? Do you feel that there is a better school placement for your child? The school doesn't listen to you. Your child isn't making any progress. Who can you turn to for help? These concerns and others can be addressed by requesting special education mediation. Concerns/Questions about your child's special education? Learn about mediation and how you can solve problems.
Presenter: Jean Mizutani, Family Educator -Include NYC formerly RCSN

EMPOWERED PARENTS: BUILDING YOUR TOOLBOX

Tuesday, July 17th, 2018 **1770 Stillwell Avenue, Bronx, NY 10469 – 2nd Floor** **Time: 10am-12pm.**
This workshop will provide parents, caregivers and professionals with specific skills and strategies for connecting with your child to inspire behaviors change. Parents, caregivers and professionals will learn to develop routines and expectations that everyone can follow & creating a family atmosphere where everyone has value. This workshop will guide parents how to promote independence and cooperation.
Presenter: Ramapo for Children

SPECIAL EDUCATION MEDIATION

Wednesday, July 25th, 2018 **160 Lawrence Avenue, Brooklyn, NY 11230- Room 205** **Time: 10am-12pm**
Do you want to change your child's IEP? Do you need to add services to the IEP? Do you feel that there is a better school placement for your child? The school doesn't listen to you. Your child isn't making any progress. Who can you turn to for help? These concerns and others can be addressed by requesting special education mediation. Concerns/Questions about your child's special education? Learn about mediation and how you can solve problems.
Presenter: Ruth DiRoma, Family Educator -Include NYC formerly RCSN

GUARDIANSHIP & SPECIAL NEEDS PLANNING

Thursday, August 2nd, 2018 **160 Lawrence Avenue, Brooklyn, NY 11230 - Room 205** **Time: 10am-12pm.**
During this workshop, the presenter will use her personal and professional experience as a parent of a child who has special needs to guide you through the intricacies of navigating the special needs planning. This is the driving force dedicated to her practice in this area. The key topics she will discuss are: guardianship and special needs planning issues on how to meet the health, legal and financial needs of children and youth with disabilities. Alternatives to guardianship and ways of planning for your child's future will also be discussed.
Presenter: Adrienne Arkontaky Esq. Vice President/Managing Attorney– The Cuddy Law Firm

To register for a workshop please
Call 718-436-7979 Ext. 704 or
Email familyconnect@adaptcommunitynetwork.org



Principio de Agosto del 2018

Talleres para padres, profesionales y cuidadores. Favor no traer niños

MEDIACIÓN SOBRE EDUCACIÓN ESPECIAL

Jueves, 12 de Julio del 2018 80 West End Avenue, New York, NY 10023 – Salón 124

Hora: 10am-12pm

¿Tiene problemas con la educación especial de su hijo(a)? ¿Desea cambiar el IEP de su hijo/a? ¿Necesita cambiar los servicios en el IEP? ¿Siente usted que no es la mejor escuela para su hijo/a? ¿En la escuela no la escuchan? ¿Su hijo/a no está progresando? ¿A quién puede recurrir para pedir ayuda? Estas y otras inquietudes pueden resolverse pidiendo la mediación de educación especial. Conozca más acerca de la mediación y cómo puede resolver los problemas.

Presentadora: Jean Mizutani, Family Educator -Include NYC formerly RCSN

VENGA Y APRENDA A CONSTRUIR SU CAJA DE RECURSOS PARA MEJORAR EL COMPORTAMIENTO DE SU NIÑO (A)

Martes, 17 de Julio del 2018 1770 Stillwell Avenue, Bronx, NY 10469 - Salón Segundo Piso

Hora: 10am-12pm

Este taller proporcionará a los padres, cuidadores y profesionales estrategias y técnicas para mejorar el cambio de comportamiento. Un énfasis en como identificar las habilidades del niño (a) para crear éxito y aumentar la posibilidad de dicho proceso e incrementar la mutua confianza entre padres y niños. Los padres y cuidadores pueden crear familias saludables mediante el uso de herramientas que satisfagan las necesidades y enseñan habilidades.

Presentadora: Ramapo for Children

MEDIACIÓN SOBRE EDUCACIÓN ESPECIAL

Miércoles, 25 de Julio del 2018 160 Lawrence Avenue, Brooklyn, NY 11230- – Salón 205

Hora: 10am-12pm

¿Tiene problemas con la educación especial de su hijo(a)? ¿Desea cambiar el IEP de su hijo/a? ¿Necesita cambiar los servicios en el IEP? ¿Siente usted que no es la mejor escuela para su hijo/a? ¿En la escuela no la escuchan? ¿Su hijo/a no está progresando? ¿A quién puede recurrir para pedir ayuda? Estas y otras inquietudes pueden resolverse pidiendo la mediación de educación especial. Conozca más acerca de la mediación y cómo puede resolver los problemas.

Presentadora: Ruth DiRoma, Family Educator -Include NYC formerly RCSN

TUTELA Y PLANIFICACIÓN PARA PERSONAS CON NECESIDADES ESPECIALES

Jueves, 2 de Agosto del 2018 160 Lawrence Avenue, Brooklyn, NY 11230- Salón 205

Hora: 10am-12pm.

En este taller se discutirá de la tutela y todo lo relativo a la planificación para adolescentes con necesidades especiales: cómo cumplir con la salud, el derecho y las necesidades financieras, alternativas a la tutela y cómo planificar para el futuro de los jóvenes con discapacidades. Su experiencia personal y profesional los guiará en la navegación, y planificación de necesidades especiales. Ella es la madre de una adolescente con necesidades especiales, la fuerza que la impulsó a dedicar su práctica en este ámbito.

Presentadora: Adrienne Arkontaky Esq., Vice President/Managing Attorney– The Cuddy Law Firm

ADAPT

COMMUNITY NETWORK

[we change]

*formerly United Cerebral Palsy of New York City

OVERNIGHT RESPITE

ADAPT's Overnight Respite Program offers temporary overnight care for families who need a break from the continuous demands of caring for a family member who has a developmental disability. Our modern family home is wheelchair accessible and is located on the grounds of ADAPT's spacious 12-acre Hausman Campus in the Pelham Gardens neighborhood of the Bronx. Families can be assured of a safe, comfortable, homelike and caring environment for their loved one. **The residence is the only freestanding wheelchair accessible overnight respite program in New York City.** In some cases, transportation can be provided, but if not, families are responsible for providing their own transportation.



Overnight Respite offers the following services:

- All meals and snacks
- A wide variety of regularly scheduled recreational activities
- Laundry services
- Bathing and personal care
- Routine administration of medications

The Overnight Respite Program is operational 24-hours a day, seven days a week. The program is open year-round, except for two weeks in November. Parents and guardians may stop by at any time to visit their family member who is a guest at the facility. This program is available for any child or adult who is a New York City resident, is physically disabled and/or developmentally disabled, and meets the New York State Office of Persons With Developmental Disabilities (OPWDD) and Family Support Services guidelines. Guests may stay at the residence for up to fourteen days at a time, depending on availability, and a maximum of 30 days per year. The application process can take a month to complete. We recommend making reservations months in advance for holidays and the summer period when demand is greatest. There is emergency Respite at the facility through OPWDD for Bronx and Manhattan individuals.



To obtain more information or apply to the program

Contact Project CONNECT at:

877-827-2666

projectconnect@adaptcommunitynetwork.org

ADAPT Community Network
80 Maiden Lane, New York, NY 10038
www.adaptcommunitynetwork.org

The mission of ADAPT is empowering people through innovative solutions, one person at a time.



JOIN THE ADVENTURE

EXPLORE OUTDOORS MAKE NEW FRIENDS CREATE MEMORIES

CARES provides daily learning experiences for your child to develop and expand daily living skills to foster independence, socialization, share household skills and daily living activities.

A great opportunity for your children to learn new skills, participate in an overnight program and explore the community. CARES experienced staff offer coordinated, social and learning activities.

**ALL DAILY MEALS, SNACKS AND LINENS PROVIDED.
JUST PACK YOURSELF AND COME HAVE FUN!**

C.A.R.E.S. UPSTATE SUMMER SCHEDULE

- Monday July 2nd - Thursday July 5th
- Monday July 9th - Thursday July 12th
- Monday July 16th - Thursday July 19th
- Monday July 23rd - Thursday July 26th
- Monday July 30th - Thursday August 2nd
- Monday August 6th - Thursday August 9th
- Monday August 13th - Thursday August 16th
- Monday August 20th - Thursday August 23rd
- Monday August 27th - Thursday August 30th



Relax in the outdoor pool, play games, enjoy fresh air sing, karaoke, participate in barbeques, movie nights, off-site trips, explore parks, go fishing, bowling, and more!



For Eligible Children ages 10 and older at NO COST
Sessions available Monday to Friday all summer long and during school holidays year round
Sessions book up quickly • Call to reserve your child's place. To apply call Dixin Chen at 212-420-1970 ext. 176 or email inquiries to dchen@caresnyc.org



June 14, 2018

Sign in Sheet

NAME	AFFILIATION	PHONE	EMAIL
<i>Maria D'Amico</i>	<i>ADDC</i>	—	—
Kathy Kelly	AHRC NYC	212 780-2724	Kathy.Kelly@AHRCNYC.ORG
<i>Keibano D'Rosario</i>	<i>Parent to Parent</i>	646 766 3461	<i>kdrosario@ptopnyc.org</i>
<i>Silvia Verga</i>	<i>NYDBC</i>	718-997-4855	<i>silvia.verga@qc.cuny.edu</i>
<i>Annrose Bacani</i>	<i>PHP</i>	917-576-375	ABACANI@PHPCARES.ORG
<i>Ellen Bleckorn</i>	<i>OPWDD</i>	646 766-3247	<i>Ellen.Bleckorn@opwdd.ny.gov</i>
<i>Bianca Almedina</i>	<i>NYC Council</i>		<i>balmeding@council.nyc.gov</i>
<i>Elizabeth Asen</i>	<i>YAI</i>		<i>elizabeth.asen@yai.org</i>
<i>Yelena Batkha</i>	<i>ANRC</i>	212-803-7340	<i>YELENA.BATKHINA@ANRCNYC.ORG</i>
<i>Mary Grace Giuliano</i>	<i>OPWDD</i>		<i>marygrace.x.giuliano@opwdd.ny.gov</i>
<i>IANA KATZ</i>	<i>Ohel Baia Etra</i>	718 686-3989	<i>IANA-KATZ@ohelfamily.org</i>
<i>Sarah Lipsstein</i>			<i>horsesplayensl@aol.com</i>
<i>Carol Lincoln</i>	<i>Adapt Comm Network</i>	718-859 5420	<i>clinc@adaptcommunitynetwork.org</i>
<i>Bernadette Elkind</i>	<i>Parent</i>	631-662-6743	<i>petenoraapt@gmail.com</i>
<i>Cliff Elkind</i>	<i>Parent</i>	516-480-2336	<i>petenoraapt@gmail.com</i>
JEANETTE ROJAS	PARENT	(917) 659-8396	<i>JeanetteRojas_7@yahoo.com</i>
<i>Jackie Conzo</i>	<i>PARENT SNACK</i>	212 739-9996	<i>jackie@snacknyc.com</i>
<i>Liz Brady</i>	<i>Snack</i>	212 439.9996	<i>liz@snacknyc.com</i>
<i>Gelina Marin</i>	<i>QSAC</i>	718-728- 8476	<i>emarin@qsac.com</i>
<i>Christina Muceri</i>	<i>AHRC</i>	212-780-2532	

Chris Treiber

Michael Haas

Caroline Dunn

IAC

Parent

YAI

212

645-6360

(646)

258-4413

212 2736296

Chris@iecn.org

mike066@rcn.com

caroline.dunn@yailog

May 10, 2018

NAME	AFFILIATION	PHONE	EMAIL
Deidre Davis	ADAPT Community Network	877-877-2666	ddavis@adoptcommunitynetwork.org
Tony Hwang	Adapt Community Network	212-683-6100 x1121	mhwan@adoptcommunitynetwork.org
Irene Haynes	AHRC	646-780-0244	ihaynes.Irene.Haynes@ahrcnyc.org
Margaret Puddington	parent	212-799-2042	Margaret.puddington@gmail.com
LORI POWESLER	INCLUDE NYC	212 677 4650	LPONESLER@INCLUDENYC.ORG
MARILYN RUBINSTEIN	ECDC - MP	212 746 6175	MRUBINST@MP.ORG
Yesenia Estrella	Esperanza	212 928-5810	yestrella@esperanzacenter.com
JIM MALLEY	ESPERANZA	212-928-5810	Jmalleysesperanzacenter.com
Mary McGuire Weiser	MFSSAC	917 748 6076	manhattanfamilyadvisor@gmail
Jackie Cochran	MFSSAC	917 - 703-0444	jackieeld@gmail.com
Eily Rufen	NYCFAIR PARENT	917-833 4738	nycfair@gmail eily.rufen@gmail
JESSIE BACKE	AHRC NYC	212 780-2348	jessie.backe@ahrcnyc.org
URISZULA KOWALCZYK	ADAPT	718 x704 456 7979	URKOWALCZYK@ adoptcommunitynetwork.org
NICOLE PADIUA	LOWER WEST SIDE HSC	20-307 7107	Npadiua@homecareny.org
Peggy Groce	212-802- 1625	212-254- 6896	mgroce@schools.nyc.gov mgroce# @ aol.com
STUART FLAVIN	SNPP SNPP	917-318- 5051	stuart@specialneedsnyc.com
LYNN DECKER	BLAN	646-442 4188	ldecker@cidny.org
Susan Williams	Parent MM 30	212-570 6860	manhattanmatters@gmail.com