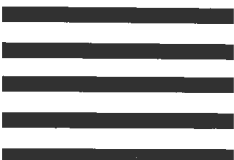


PARTNERS HEALTH PLAN
2ND FLOOR
655 3RD AVENUE
NEW YORK NY 10164-4520

POSTAGE WILL BE PAID BY ADDRESSEE

BUSINESS REPLY MAIL
FIRST-CLASS MAIL PERMIT NO. 6168 NEW YORK, NY



NO POSTAGE
NECESSARY
IF MAILED
IN THE
UNITED STATES



PARTNERS
HEALTH PLAN

PHP is about helping
people with intellectual &
developmental disabilities.

PHP is about helping you get
your support and services.

PHP is about teamwork that
makes good care better.

PHP is designed for you,
and is built to last.

phpcares.org

The benefit information in this document is a brief summary, not a complete description of benefits. For more information, call Partners Health Plan Participant Services or read the Partners Health Plan Participant Handbook. Limitations and restrictions may apply. Benefits may change on January 1 of each year.

Partners Health Plan is a managed care plan that contracts with Medicare and the New York State Department of Health (Medicaid) to provide benefits to Participants through the Fully Integrated Duals Advantage for Individuals with Intellectual and Developmental Disabilities (FIDA-IDD) Demonstration.

H9869_2018_16749_PHP_FIDAIDD_Trifold Brochure



PARTNERS
HEALTH PLAN

WELCOME
TO BETTER

PHP CARE COMPLETE FIDA-IDD PLAN
[MEDICARE-MEDICAID PLAN FOR
PEOPLE WITH INTELLECTUAL AND
DEVELOPMENTAL DISABILITIES]



This is where people with challenges get the support they need and deserve.

A group of leaders in supporting people with intellectual and developmental disabilities worked together to shape a managed care plan that is designed for you and built to last.



We support you in living the life you choose.

What that means is when there is something you want to do – participate in an activity or play a sport, start a hobby or make a friend – we'll help make it happen.



We build a system of care around you.

When you have more options you have more pathways to the life you dream of. That's what you can expect with your own two-person team: double the support.



More transportation options, less waiting time, and other good news.

When a life-changing piece of medical equipment is needed, we streamline the process. There is a reason you have your own support team. It means someone is working to get rid of hassles and make access to the things you need easier. It's that simple.

Yes! I want to know more

about Partners Health Plan

Fill the following and place completed

form in mail or call us at:

1-855-747-5483 / TTY 711

8am-8pm, 7 days a week

Name: _____

Address: _____

Apt. _____

City: _____

State: _____

Zip: _____

Telephone (our representative may call): _____

Marketing Representative's Name: _____

You can also enroll today!

Call New York Medicaid Choice at:

1-844-343-2433 / TTY 1-888-329-1541

Monday - Friday

8:30 AM to 8:00 PM

Saturday

9:00 AM to 6:00 PM



RECREATION OPPORTUNITIES: (Contact the Referral and Information Center at (212) 780-4491). **School Holiday Respite (All Boroughs):** Operates when school is not in session during the school year, 10 a.m. – 4 p.m. This program is to provide respite to families when school is not in session. Transportation is provided, must be in the HCBS waiver. Current openings in both the children's program (ages 6 – 13 years old). Please Contact Valerie Adolphe at valerie.adolphe@ahrcnyc.org **City Teens Program:** Individuals aged between 12-21 who are diagnosed with ASD (Autistic Spectrum Disorder) and are NOT eligible for OPWDD services. Mostly open to teens from Brooklyn but can accommodate a few from other boroughs. Program meets Sundays during the school year in Union Square for fun adventures around the city. Please contact Sam Emsell at samuel.emsell@ahrcnyc.org. **Overnight Weekend/Getaway Respite Programs (Mini Camps, Adult Hotel Respite, Kids and Teens Holiday Respite, and Bronx Escorted Vacations):** Available for independent travelers and individuals that are able to self-medicate and those who enjoy trips to various new places including upstate New York from Friday evening through Sunday afternoon to discover various local attractions and seasonal activities. All individuals interested in this program must be in the HCBS Waiver. No cost, transportation provided. Please Contact Natalia Brzykcy at natalia.brzykcy@ahrcnyc.org. **Manhattan, Staten Island, Brooklyn and Queens Saturday Recreation and Socialization Programs for Children, Teens/Young Adults and Adults:** Operates Saturdays from October to May, 10 a.m. – 4 p.m. Transportation is provided, must be in the HCBS waiver. Current openings in both the children's program (ages 6 – 12 years) and teens/young adult program (13+). Please Contact Valerie Adolphe at valerie.adolphe@ahrcnyc.org or Emily Hirst at emily.hirst@ahrcnyc.org. **General Recreation Activities: Softball in Central Park, Brooklyn Basketball Program, Staten Island and Brooklyn Restaurant Club, Bowling throughout NYC, Quarterly Dances, Super Saturday:** Available to people who lives in New York City and NOT eligible for OPWDD services. Please contact Sam Emsell at samuel.emsell@ahrcnyc.org for more information of days and time. **Afterschool in Staten Island, Queens, Manhattan, Bronx and Brooklyn:** (for children and teens, ages 6-21). Children must live in the borough of the program. Each of our afterschool has different eligibility criteria, if you need more information please contact Robyn O'Brien at robyn.o'brien@ahrcnyc.org

Emergency Reimbursement Program (Family Support Service): The Emergency Program provides reimbursement up to \$1,000 for people who have developmental disabilities and need emergency support. The requests may be for goods and/or short term services that will support the person during the time of an emergency. A wide variety of goods and services will be considered, including: costs to replace items lost in a fire, mattress replacement after bed bug infestation, utility suspensions, eviction risks and Emergency Respite Care. Emergency Respite Care is temporary care of a person with a developmental disability provided on an emergency basis due to a family situation of extreme urgency, such as, but not limited to the hospitalization of a family member, unexpected emergency travel plans or relief needed for the caregiver due to special circumstances. Criteria for program enrollment: resides with family in Brooklyn or Queens, OPWDD eligibility. For more information call 212-895-3478. **OVERNIGHT/EMERGENCY In-Home Hourly Respite Hourly Program:** This type of Respite is a temporary care of an individual with intellectual and developmental disabilities provided on an emergency basis due to a family/caregiver situation of extreme urgency, such as the hospitalization of a family member or unexpected travel plans. The overnight/emergency respite services ensure that the person receiving supports is safe and his/her basic needs are met. Emergency respite is provided in individual's home. A caregiver must reside with the individual in the same household. An applying person should be OPWDD eligible. Services are provided to families residing in the boroughs of Queens and Manhattan. Contact Yulia Yaroshevskaya, Program Intake Supervisor at 212-780-4482. **IN-HOME RESPITE PROGRAM:** is designed to provide a relief for the caregiver. The in-home respite services ensure that the person receiving supports is safe and his/her basic needs are met. A caregiver must reside with the individual in the same household. The caregiver does not need to be present in the home during service provision hours. Services can be provided in the home or out in the community. Individual applying for services must be OPWDD waiver eligible. Waiting list for people ages 3 and over in 5 boroughs of NYC. Contact the Referral and Information Center at (212) 780-4491, **COMMUNITY HABILITATION:** CH is a goal oriented service designed to train and support individuals to increase their independence. Services can be provided in the home or out in the community and the caregiver does not need to be present in the home during service provision. Individual applying for services must have a Medicaid Service Coordinator and be OPWDD waiver eligible. We are open for people ages 3 and over in 5 boroughs of NYC. There is immediate opportunity for Manhattan and the Bronx. Contact the Referral and Information Center at (212) 780-4491.

EMPLOYMENT and BUSINESS SERVICES: TechnoStart: Program in S.I. for individuals with I/DD. 12 week vocational training program. Program helps individuals 18 years and older to Become Certified in Microsoft Office Applications and become Document Management Specialists learn about digital archiving, data entry and more. Job placement services and benefits assistance provided. Contact Anna Chakryan at 718-981-3452. **Pathway to Employment:** The Pathway to Employment program offers individuals already enrolled in a waiver service an opportunity to discover their employment interests and improve their skill set. Participants will experience 3-4 job roles in the community through volunteer sites, receive job readiness training and personalized vocational discovery throughout this 1 year service with the goal of transitioning to paid employment. A variety of internship sites are available and this offers great opportunity for thorough



discovery. Contact Cynthia Azueta at 718-981-3452 for Staten Island; Pilar Jones at 212-895-3339 for Brooklyn; Ana Kuharik at 718-944-5099 for Bronx, Flora Nikogosyan at 212-634-8700 for Manhattan; Belma Dautovic at 718-639-5500 for Queens. **Brooklyn Day Hab without walls:** Day Hab without walls program explores the world of work through daily activities out in the community. Some of services and activities provided are: resume preparation workshops, interview preparation, personal hygiene skills, self-care, socialization skills, money management, mobility training, life skills training, reading and writing, anger management, relaxation techniques, proper nutrition, healthy exercise and recreational type activities. Additionally, individuals volunteer at different sites and participate in diverse community events. Contact Pilar Jones 212-895-3339. **Staten Island Day Hab without Walls:** Day Hab without walls program explores the world of work through daily activities out in the community. Some the of services and activities provided are: resume preparation workshops, interview preparation, personal hygiene skills, self-care, socialization skills, money management, mobility training, life skills training, reading and writing, anger management, relaxation techniques, proper nutrition, healthy exercise and recreational type activities. Additionally, individuals volunteer at different sites and participate in diverse community events. Contact Cynthia Azueta at 718-981-3452. **Senior Retirement Services:** Day Hab Without Walls program for individuals over age 55, must be a Bronx resident. Contact Ana Kuharik at 718 944-5099. **Bronx Day Hab Without Walls:** This program offers the opportunity for community activities including volunteering and social outings. The premise is to prepare people to move out of Day Hab and into employment. Contact Ana Kuharik, 718-944-5099 (Bronx) **Youth:** Train & Earn Careers in Environmental Services Program is a vocational training program for NYC residents with DD/ID/MI and LD and/or low income; 18–24 years old. 15 weeks of training combines classroom instruction with paid internship at major NYC businesses. Successful graduates will become Certified Custodian Technicians- certified by third party. There are three cycles during the year. The program offers job placement and job supports after graduation. Integrated program great for developing relationships and preparing for employment. Brooklyn: Jeremiah Jenkins, 212-895-3310; Bronx, Cristina Mapoy 718-944-5099, Staten Island, Anna Chakryan at 718-662-1432. **Staten Island Intern & Earn Program:** DYCD- 14 weeks of a paid internship program for young adults from 16-24 years old, who are out of school and out of work. Internship opportunities include; clerical, retail, culinary and maintenance. 350 hours of paid internship followed by job placement. Call Anna Chakryan 718-662-1432 or Natalya Sarukhanova at 718-981-3452. **HIRE** - Supported Employment, placement in jobs dependent on applicant's skills and abilities. Brooklyn: Sofiya Nibelitskaya, 212-895-3325. Queens: Melissa Levin-Tormos 917-662-6496. Bronx: Wayne Thomas, 718-944-5099. Staten Island: Jaclyn Tocco (718) 981-3452. Manhattan: Mikala Abrahams - 212-634-8673. **Job Connection Center- Psycho-social Clubhouse (Brooklyn):** A small, innovative, community-based membership program specifically designed to support people living with mental illness and intellectual and developmental disabilities. Voluntary participations allows members to gain free access to opportunities to rejoin the worlds of friendship, family, employment and education, and to the services and support they may individually need to continue their recovery. Call Blessing Nwulu at 212-895-3370.

ADULT DAY SERVICES: A variety of programs where individuals become valued community members in different ways, including volunteering, shopping, visiting local attractions, etc. The programs offer many life enhancing experiences in the arts, travel training, and vocational services. There are also programs that operate solely in the community, and in higher education programs in cooperation with local colleges. For more details, call Central Intake at 212-780-4491.

Nicosia Family Reimbursement: The service provides the opportunity to be reimbursed for purchased services and goods, and the possibility of purchasing services and goods that are not funded through any other sources. The goods and services have been deemed appropriate to meet the needs of the person being served. Criteria for grant: OPWDD eligibility, resides with family, vacancies for those living in Manhattan, Brooklyn, Queens, Bronx or Staten Island. For more information call 212-895-3478. **Intensive Behavioral Services** Program in the Bronx which provides Intensive Behavioral Services for individuals who live in non-certified or Family Care Homes and present with substantial challenging behaviors that put them at risk of placement in a more restrictive living environment. The service involves in home behavior management evaluation and treatment by psychologists who specialize in Functional Behavioral Assessment and Intervention. For information about the application or questions, contact Lisa Adorno at 718-643-2566. **Queens Intensive Parent Training:** This family support program serves ID/DD parents who reside in Queens, who are living in the community and raising their children. This service provides education, parent training, intensive case management, and advocacy to help the parent improve their parenting skills and help keep children in the home with the parent(s). Criteria: reside in Queens County; parent must be ID/DD. Call Annette Spallino 212-780-2592. **Non-Medicaid Service Coordination:** The service includes assisting families through the Medicaid application process, information and referral services, outreach, parent networking and service access assistance for individuals and their families. Service Coordinator is able to make connections with diagnostic, residential, habilitative, educational, vocational, medical and recreational services. In addition, the Service Coordinator can assist with accessing benefits and entitlements, such as Medicaid and SSI. Criteria for program enrollment: resides with family, vacancies for Manhattan, Queens, Bronx, Brooklyn and Staten Island. No Medicaid required. For further information please call 212-895-3478. **Article 16 Clinic Services:**



December 2018
AHRC PROGRAM VACANCIES
www.ahrcnyc.org

Ongoing vacancies in Manhattan for psychological and psychosocial evaluations, individual and group counseling and nutrition services. There are also ongoing vacancies in the Bronx for individual and group counseling, psychological, and psychosocial evaluations at the 2488 Grand Concourse Clinic. Services are available in English and Spanish. Anyone interested in these programs should contact AHRC Central Intake at 212-780-4491. **REHAB Services:** Immediate openings for physical, speech, and occupational therapy. Call Robin Phillips at (212) 780-2762 for more information on how to request services. **FREE Psychological/Psychosocial Evaluations:** AHRC Article 16 Clinic is offering Psychological Evaluations and Psychosocial Evaluations for individuals who are developmentally disabled who do not have Medicaid and are residents of the five boroughs of NYC. Services are available in English and Spanish. For more information or to make a referral, call AHRC Central Intake at 212-780-4491. **PEIR:** The program offers drug and alcohol prevention education groups for individuals with ID/DD and/or TBI who are at risk of abusing substances. The program also provides positive alternative groups such as creative arts therapy, recreation trips, and a weekend planning group. For more information contact Jason Conover at 212-780-2658. **Linkages:** Provides intensive case coordination for individuals diagnosed with ID/DD, TBI, and substance use disorder to assist with access to substance use disorder treatment and to help them maintain sobriety after they complete a rehabilitation program. The coordinator can assist individuals in accessing vocational training programs, psychosocial clubs, outpatient SUD programs, AA community meetings, and assistance applying for appropriate HRA housing. These services can be used by people already receiving other types of service coordination. For further information contact Danielle Kain at 646-845-6036

OVERNIGHT RESPITE (out of home – NOT EMERGENCY; emergency above): Guests must be age 8 and up, and must be weight bearing if non-ambulatory. Cannot be seriously medically involved where extra nursing staff would be necessary. There are availabilities in Manhattan, the Bronx, and Queens only. *Families should apply for respite before the need arises; the application has to be approved beforehand.* Contact the Referral and Information Center at (212) 780-4491.

RESIDENTIAL: Anticipated and immediate openings in all boroughs. Details vary depending on the setting. **If you have any questions please contact: 212-780-4457. If you would like to make a referral, please contact 212-780-4491.**

AHRC NEW YORK CITY'S
ARTICLE 16 CLINIC OFFERS
A WIDE RANGE OF CLINICAL
SERVICES AT TWO PRIMARY
CLINICS AND VARIOUS
SMALLER SATELLITES
IN THE FIVE BOROUGHS OF
NEW YORK CITY.

FOR INFORMATION

PLEASE CONTACT AHRC NEW YORK CITY'S
REFERRAL AND INFORMATION CENTER
TEL: 212.780.4491
EMAIL: REFERRALS@AHRCNYS.CITY.GOV
WEBSITE: WWW.AHRCNYS.CITY.GOV



AHRC New York City
83 Maiden Lane
New York, NY 10038
P. 212-780-2500
F. 212-780-2353
www.ahrcnyc.org



ARTICLE 16 CLINICAL SERVICES

Serving people with intellectual
and other developmental
disabilities and their families.



NYSARC Inc., New York City Chapter

WHO CAN RECEIVE SERVICES

Clinical services at AHRC are offered to people with intellectual and other developmental disabilities from age 5 through the senior years.

In addition, certain support services can be provided to family members who do not themselves have a disability.

CLINICAL SERVICES AVAILABLE

- Psychological Testing
- Psychosocial Evaluations
- Individual, Group & Family Counseling
- Nutritional Services
- Weight Management Programs
- Nursing Services
- Speech Therapy
- Occupational Therapy
- Physical Therapy

OTHER SERVICES AVAILABLE

AHRC New York City offers a number of related services.

- Sibling Services
- Legal Services
- Medicaid Service Coordination
- Day Programs
- Residential Services
- Recreation and Camping
- Bronx Crisis/In-Home Behavior Management
- Family Reimbursement

OUR TRADITION OF QUALITY AND CARE CONTINUES

FOR OVER SIXTY YEARS, AHRC NEW YORK CITY HAS PROVIDED ESSENTIAL AND HIGH QUALITY SERVICES TO PEOPLE WITH INTELLECTUAL AND OTHER DEVELOPMENTAL DISABILITIES.

SCHEDULING AN APPOINTMENT

Call (212) 780-4491 and a staff member will arrange the appointments and answer your questions. You can also arrange a time to discuss your family's needs or request an informational presentation to your community or parent group.

WHEN AND WHERE SERVICES ARE PROVIDED

AHRC MAIN OFFICE
83 Maiden Lane, 5th Fl. New York, NY 10038
Mon. - Fri. 8am - 7pm Sat. 9:30am - 5pm
AHRC BRONX OFFICE
2488 Grand Concourse, 3rd Fl. Bronx, NY 10458
Mon. - Thurs. 9am - 6pm Fri. 9am - 5pm Sat. 9am - 2pm

Additionally, AHRC operates smaller satellite clinics throughout the five boroughs by appointment. All sites are easily accessible by public transportation. Ambulette service may be arranged if required.

PAYMENT

Most services are covered by Medicaid and/or Medicare. If a person does not have Medicaid or Medicare, we may be able to help obtain it.

If you are a member of an HMO or other managed care plan, you may not be eligible to receive certain services. For people who don't have coverage, we offer a sliding



Department of Family and Clinical Services
83 Maiden Lane, 5th Floor || New York, NY 10038

AHRC OF NYC Provides

FREE

Psychological

Psychosocial



Evaluations

Psychological and Psychosocial Evaluations
for people who may have a developmental disability and are
seeking OPWDD eligibility and who do not have Medicaid

Serving the New York City residents from all five boroughs

For additional information regarding evaluations for people without Medicaid,
please contact AHRC Referral & Information Center at:

(212) 780-4491 / email referrals@ahrcnyc.org / Fax (212) 508-6366

Department of Family and Clinical Services
83 Maiden Lane, 5th floor || New York, NY 10038

AHRC

new york city

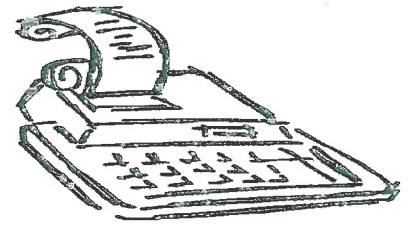
**AHRC NYC provides Non-Medicaid
Service Coordination**

**For people with OPWDD eligibility
who do not have Medicaid**

For additional information regarding Non-Medicaid Service
Coordination, please contact the Referral & Information Center
(212) 780-4491 || Referrals@ahrcnyc.org



The Francesca Nicosia Reimbursement Fund



What is it? The Nicosia Funds are reimbursement awards of up to \$500 to help provide assistance to people with developmental disabilities who live with their families to pay for goods and/or services that are not otherwise available through existing programs or funding sources.

What goods or services may be requested? The requests may be for goods or short term services that will enhance the quality of life of the person with a disability. A variety of goods/services will be considered such as:

- adaptive equipment (not covered by Medicaid)
- special appliances or furniture
- summer camp
- adaptive toys
- clothing
- respite

Who can apply? Applications for assistance are accepted from families in NYC who live with a person with a disability who has also been determined OPWDD eligible.

What happens when a family applies? The family submits an application, proof of OPWDD eligibility, and a receipt or estimate for the goods or services. The reimbursement coordinator may request additional information.

For more info please call 917-715-8035 or email

AHRCfamilyreimbursementprograms@ahrcnyc.org

El Fondo De Reembolso De Francesca Nicosia

Qué es ?

Los Fondos de Nicosia son reembolsos de hasta \$ 500 para ayudar a las personas con discapacidades del desarrollo que viven con sus familias a pagar por bienes y / o servicios que de otra manera no están disponibles a través de programas existentes o fuentes de financiamiento.

Qué bienes o servicios pueden solicitarse?

Las solicitudes pueden ser de bienes y / o servicios a corto plazo que mejorarán la calidad de vida de la persona con discapacidad. Se considerará una amplia variedad de bienes y servicios, incluyendo:

- Equipo adaptativo
(No está cubierto por Medicaid)
- Electrodomésticos o muebles especiales.
- Campamento de verano
- Juguetes adaptativos
- ropa
- respiro

Quién puede aplicar?

Se aceptan solicitudes de asistencia de familias en la ciudad de Nueva York que viven con una persona con una discapacidad del desarrollo que también se ha determinado como elegible para OPWDD.

Qué pasa cuando se aplica una familia?

La familia presenta una solicitud, prueba de elegibilidad de OPWDD y un recibo o estimación de los bienes o servicios. El coordinador de reembolsos puede solicitar información adicional a la familia.



Para obtener más información sobre el Fondo Francesca Nicosia, comuníquese con el Administrador del Fondo al 917-715-8035 o AHRCFamilyReimbursementPrograms@ahrcnyc.org

For information about connecting to YAI services, go to yai.org/link
or call us at 212.273.6182 - age range and eligibility requirements vary

BROOKLYN

Ballet Yoga Group for Children on the Autism Spectrum
BCAP Weekend Recreation Program
Community Habilitation
Day Habilitation
Saturday Recreation Program
Emergency Respite Reimbursement
Family Reimbursement
Friday Night Social
In-Home Behavior Management
Parent Training: Parents with Special Needs
Social Skills Group for Children on the Autism Spectrum

QUEENS

Afterschool Program
Community Habilitation
Crisis Intervention
Day Habilitation
Emergency Respite Reimbursement
Family Reimbursement
In-Home Behavior Management
Non-Medicaid Skills Training
Overnight Respite
Parent Training: Sexuality
Parent Training: Parents with Special Needs

BRONX

Adult Recreation
Club Fun
Community Habilitation
Day Habilitation
In-Home Respite
Parent Training: Behavior Management

MANHATTAN

Adult Recreation
Community Habilitation
Crisis Intervention
Day Habilitation: Site-Based and Without Walls
Emergency Respite Reimbursement
Family Reimbursement
Holiday Respite
In-Home Behavior Management
In-Home Respite
Parent Training: Behavior Management
Parent Training: Parents with Special Needs
Parent Training: Sexuality
Social Skills for People with Autism
You and I: Social and Networking Skills

STATEN ISLAND

Parent Training: Behavior Management

MULTI-REGION

Free Education Workshops: For people with disabilities, caregivers, and professionals
Free psychological, psychosocial and autism assessments - Bk, M, Qns
Independent Living Program
Leisure Trax
NYSTART: Crisis Prevention and Response for People with I/DD (212.273.6300) - M, Bx, Qns
Skills Building: Transition to Independence for Young Adults on the Autism Spectrum
Supported Employment Services
Mainstreaming at Camp (MAC)
Manhattan Star Academy: Private School
Resources and Supports Workshops: Learn about the I/DD System and Services

YAI and its network agencies also provide services in Long Island, Rockland, Westchester and New Jersey

Visit yai.org for more information

TRAINING FOR CAREGIVERS OF PEOPLE WITH INTELLECTUAL AND DEVELOPMENTAL DISABILITIES

BEHAVIOR MANAGEMENT TECHNIQUES FOR PEOPLE OF ALL AGES

THURSDAYS: Dec. 13 thru Feb. 28

460 West 34th Street

4:30PM- 6:30PM

English & Spanish Groups

Light dinner provided

Respite available

Join PROJECT GROW Today!

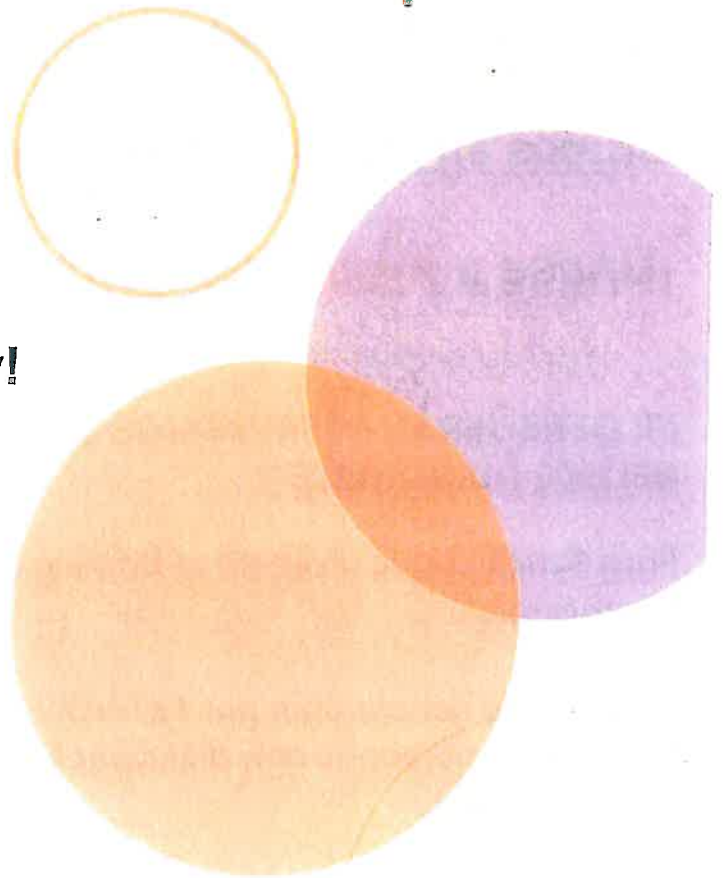
PRE-REGISTRATION IS REQUIRED

Person must reside at home with family
in Bronx or Manhattan.

New York State Office for People with
Developmental Disabilities (OPWDD)
Eligibility Required.

**For more information and to register call
212.273.6259 or email projectgrow@yai.org.**

YAI Seeing beyond disability.



GRUPO DE ENTRENAMIENTO PARA PADRES DE PERSONAS CON DISCAPACIDADES DEL DESARROLLO

TÉCNICAS DE COMPORTAMIENTO PARA TODAS LAS EDADES

JUEVES: a partir del 13 de diciembre
hasta el 28 de febrero

460 West 34th Street

4:30PM- 6:30PM

Grupos en inglés y en español

¡Únase a **PROJECT GROW** hoy!

**SE OFRECERÁN REFRIGERIOS RESPIRO/
RELEVO DISPONIBLE**

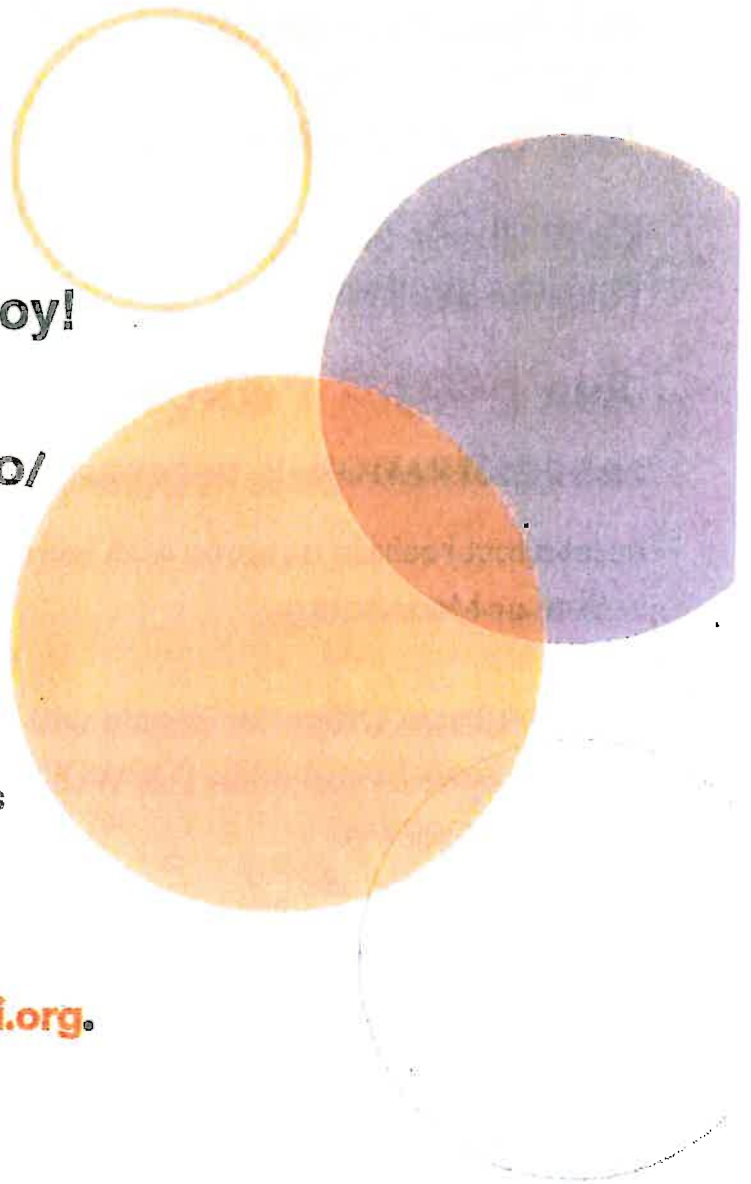
Para familias que viven en el Bronx o
Manhattan.

Se requiere ser elegible por OPWDD
(oficina de personas con discapacidades
de desarrollo)

Necesita registrarse- llame al

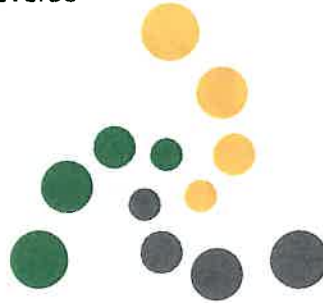
212.273.6259 o email projectgrow@yai.org.

YAI Viendo más allá
de la discapacidad.





Seeing beyond disability.



Advocacy RESOURCE CENTER

RESOURCES AND SUPPORTS:

Navigating the System for People with Developmental Disabilities

Learn About:

- Eligibility and access to services through NYS Office for People with Developmental Disabilities (OPWDD)

Morning Workshops (10am-12pm)

Wednesday, September 12th

Wednesday, October 10th

Wednesday, October 24th

Wednesday, November 14th

Wednesday, December 19th

Evening Workshops (6pm-8pm)

Wednesday, September 26th

Wednesday, November 7th

Wednesday, December 19th

Unable to make it in person?

Phone-In Workshop (12pm-1pm)

Wednesday, October 3rd

Wednesday, December 5th

Register online for access details.

Register at: yai.org/resourcesandsupports

(Walk-ins also welcome)

460 W. 34TH St, 11TH Fl, New York

YAI LINK 212.273.6182 or link@yai.org

(Workshops are open to people with I/DD, families, caregivers, and professionals)

Supported in part by a generous grant from The Taft Foundation



Viendo más allá
de la discapacidad.

RECURSOS Y APOYOS: Navegando el Sistema para Personas con Discapacidades del Desarrollo

Infórmese sobre:

- Elegibilidad y acceso a servicios a través de la Oficina para Personas con Discapacidades del Desarrollo (OPWDD por sus siglas en inglés)

Miércoles 3 de octubre 10am-12pm
Miércoles 17 de octubre 10am-12pm
Miércoles 28 de noviembre 10am-12pm
Miércoles 12 de diciembre 10am-12pm

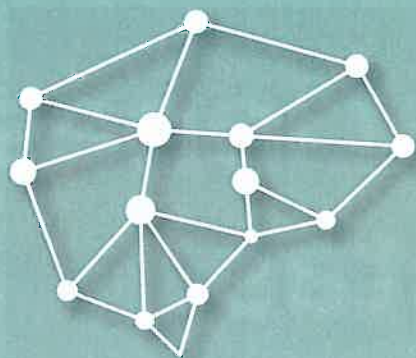
Registrarse en:

yai.org/resourcesandsupports
(Puede acudir sin previa registración)
460 W. 34TH Street, 11TH Floor, New York

YAI LINK 212.273.6412 o link@yai.org

(Talleres abiertos a individuos, familias,
proveedores de cuidado y profesionales)

Sesiones financiadas en parte con el
generoso aporte de la Fundación TAFT



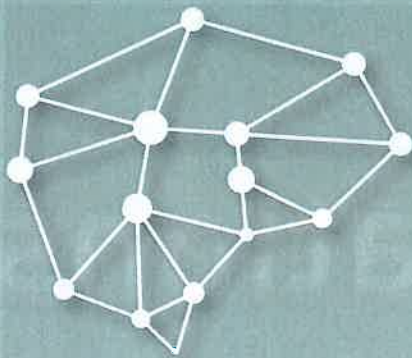
Free Evaluations

Free Psychological, Psychosocial and
Autism Assessments for Brooklyn,
Queens, and Manhattan residents*

*Eligibility criteria varies by borough.
Applicants must be *ineligible* for Medicaid.

For more information, contact YAI LINK
at **212.273.6182** or link@yai.org

*Funding provided by the NYC Department of Health and Mental Hygiene
and the NYS Office for People with Developmental Disabilities*



Evaluaciones Gratuitas

Evaluaciones psicológicas,
psicosociales y de autismo gratuitas
para residentes de los condados de
Brooklyn, Queens y Manhattan*

*El criterio de elegibilidad varía de acuerdo al condado.

Para más información, pónganse en contacto con
YAI LINK al **212.273.6182** o link@yai.org

*Financiado a través de NYC Department of Health and Mental Hygiene
y NYS Office for People with Developmental Disabilities*

Para español favor de ver el reverso

Fall 2018

Free Education Workshops

For people with
disabilities, caregivers,
and professionals

Workshops take
place at:

460 W 34th St, 11th Fl,
New York, NY 10001

10am-12pm

No children please

OCTOBER

Thursday, October 11th

Support Services for Families in Crisis

Rocio Ruiz, MA, Senior Coordinator and
Cristy Torres, LMSW, Assistant Coordinator, YAI

Tuesday, October 23rd

Sexuality: Covering the Basics and Q&A

Kat Pheysey, LMSW, MEd, Sr. Behavior
Intervention Specialist/Trainer Level 3 Sexuality
Specialist Residential & Training Department, YAI

NOVEMBER

Tuesday, November 6th

Transition to Adulthood

Emily Gerner, LMSW, Supervisor and
Tracy Kernan, LCSW, YAI LINK

Thursday, November 15th

Navigating Home Care and Other Needs

Angelo O'Neill, Allure Specialty Pharmacy

DECEMBER

Tuesday, December 4th

Self Direction 101

Caroline Dunn, LMSW, Coordinator and
Nicole Riccio, Assistant Supervisor, YAI LINK

Thursday, December 13th

Guardianship/Future Planning: What You Need to Know

Paola Martinez-Boone, MSW, Senior Advocate,
New York Lawyers for the Public Interest

Thursday, December 20th

Assessment of People with Autism Across the Lifespan

Charles Yurkewicz, Psy D, Supervisor of
Psychological Assessments, YAI Center for
Specialty Therapy

Registration is required

www.yai.org/fews

or call ► YAI LINK 212.273.6182

See the reverse side for English groups



460 W 34th St, 11th Fl, New York, NY 10001
10am-12pm

No se permite la asistencia de niños.

OCTUBRE

Miércoles 31 de octubre

Mindfulness o Atención Plena: Aprender a vivir el presente y ayudar a eliminar el estrés

Dilia Miseses, Parent and Mindfulness Skills Trainer

Jueves 29 de noviembre

NY START: Prevención de crisis y respuesta para personas con discapacidades del desarrollo y las personas que las apoyan

Bryan Alava, MA, Clinical Team Leader, NY START

NOVIEMBRE

Jueves 15 de noviembre

Problemas de Comportamiento: Consejos para promover interacciones positivas

Melissa Benzuly, LMSW, Mental Health Clinician, Premier HealthCare

DICIEMBRE

Jueves 20 de diciembre

Navegando el Sistema de Educación Especial: Sus derechos y deberes

Paola Martinez-Boone, MSW, Senior Advocate, New York Lawyers for the Public Interest

Miércoles 21 de noviembre

Tutela Legal y Planificación para el Futuro: Lo que necesita saber

Paola Martinez-Boone, MSW, Senior Advocate, New York Lawyers for the Public Interest

Necesita registrarse:
visite la página web yai.org/fews
o llame a ► **YAI LINK** 212.273.6182



Transition to Independence

For young adults, ages 17 - 21 on the autism spectrum.

Yoga & Mindfulness

Engage in calming physical and mental activities that promote movement, relaxation, self-awareness, stress reduction and socialization.

Life Skills

Develop and enhance life skills that focus on judgement, decision making, risk-taking, problem-solving and self-advocacy. Group topics include money management, community safety, self-care, relationships, and more!

Kitchen Skills

This course introduces cooking fundamentals like measuring, safety, and knife skills that are necessary in being able to prepare meals independently.

Groups available in the late afternoon and evening

For more information, please call:

YAI LINK at [212.273.6182](tel:212.273.6182) or email link@yai.org

Must meet NYC Department of Health and Mental Hygiene program criteria.

IN CRISIS?



Getting help in a crisis.

Taking care of a family member with ID/DD is stressful at times. But when the family is overwhelmed, the right support can make all the difference.

WE PROVIDE EXPERT ASSISTANCE WITH:

SHORT-TERM CASE MANAGEMENT

Our social workers will help you apply for OPWDD eligibility and will help connect you with the supports you need.

CRISIS COUNSELING

Short-term counseling to help enhance coping skills and identify solutions to problems.

BEHAVIOR MANAGEMENT

We will empower and teach parents/caregivers how to address and modify challenging behaviors in the home.

MANHATTAN

212.273.6200

manhattancrisisintervention@yai.org

QUEENS

718.793.2182 X 4572 | 718.793.2182 x 4573 (español)

queenscrisisintervention@yai.org

yai.org/helpinacrisis

Must reside in Manhattan & Queens

YAI Seeing beyond disability.

¿EN CRISIS?

Obtener ayuda durante la crisis.



Cuidar a un familiar con ID/DD es a veces estresante, pero cuando la familia está estresada, el apoyo correcto puede hacer la diferencia.

NOSOTROS LE PROVEEMOS ASISTENCIA CON:

MANEJO DEL CASO A CORTO PLAZO

Nuestros trabajadores sociales le ayudarán a aplicar por la elegibilidad de OPWDD y lo conectarán con los servicios que usted necesita.

CONSEJERÍA EN MOMENTOS DE CRISIS

La consejería a corto plazo le ayuda a usar las estrategias para lidiar con el estrés e identificar soluciones a sus problemas.

MODIFICACIÓN DE LOS COMPORTAMIENTOS

Enseñamos y empoderamos a los padres/ cuidadores en su propia casa a manejar los comportamientos desafiantes.

MANHATTAN

212.273.6200

manhattancrisisintervention@yai.org

QUEENS

718.793.2182 X 4572 | 718.793.2182 x 4573 (español)

queenscrisisintervention@yai.org

yai.org/helpinacrisis

La persona debe residir en Manhattan o Queens.

YAI Seeing beyond disability.

DEALING WITH CHALLENGING BEHAVIOR?



For referrals, or more information, email:
inhomebehaviormanagement@yai.org
or call 212.273.6611

In-Home Behavior Services
Manhattan, Queens, Bronx and Brooklyn

COMPORTAMIENTOS DIFICILES DE CONTROLAR?



Para referidos o mayor información escriba a
inhomebehaviormanagement@yai.org

Para Español llame a 212.273.6611

Servicios en casa para el Manejo del Comportamiento
Manhattan, Queens, Bronx y Brooklyn

CURRENT PROGRAM OPENINGS



Quality Services for the Autism Community
Serving New York City and Long Island

Call (718) 728-8476 for inquiries

DECEMBER 2018

QUEENS

1. Early Intervention (In-Home): Rhodie Volpe ext. 1512
2. Early Intervention Service Coordination: Ceres Joy Respicio ext 1252
3. Early Intervention (Center Based) : Joe Traegler 1521
4. Early Intervention Evaluations: Rhodie Volpe ext. 1512
5. SEIT: Rhodie Volpe ext. 1512
6. SETSS: Rhodie Volpe ext. 1512
7. Day Habilitation: Farzana Karim ext. 1233
8. Social Skills Group – High Functioning Autism: Dita DeSena ext.1418
9. Parent Training: Babina Chhetry ext. 1015
10. CPSE Evaluations: Rhodie Volpe ext. 1512
11. Evaluations for individuals without Medicaid (Psychological/Psychosocial): Rhodie Volpe ext. 1512
12. Supplemental Day Hab: Johnny Nunez ext. 1222
13. Non-Medicaid Service Coordination: Andrew Toscano ext. 1268
14. Self Direction: Broker Services Kevin Martinez ext.1240
15. Day School: Larisa Muratov ext. 1513
16. Respite: Johnny Nunez ext. 1222
17. Parent Support Group: Madelyn Wolfin ext. 1519
18. Family Reimbursement (Goods & Services): Annie Washington ext. 1219

BROOKLYN

1. Early Intervention (In-Home) contact: Rhodie Volpe ext. 1512
2. Early Intervention Service Coordination: Ceres Joy Respicio ext 1252
3. Early Intervention Evaluations: Rhodie Volpe ext. 1512
4. SEIT: Rhodie Volpe ext. 1512
5. SETSS: Rhodie Volpe ext. 1512
6. Non-Medicaid Service Coordination: Andrew Toscano ext. 1268
7. CPSE Evaluations: Rhodie Volpe ext. 1512
8. Preschool Centerbased Openings: Larisa Muratov ext. 1500
9. Housing Advocacy: Andrew Toscano ext. 1268
10. Self Direction: Broker Services Kevin Martinez ext.1240
11. Respite: Johnny Nunez ext. 1222
12. Family Reimbursement (Goods & Services): Annie Washington ext. 1219

BRONX

1. Day School: Larisa Muratov ext. 1513
2. SEIT: Rhodie Volpe ext. 1512
3. SETSS: Rhodie Volpe ext. 1512
4. Early Intervention (In-Home) : Rhodie Volpe ext. 1512
5. Early Intervention Service Coordination: Ceres Joy Respicio ext 1252
6. Early Intervention Evaluations: Rhodie Volpe ext. 1512
7. CPSE Evaluations: Rhodie Volpe ext. 1512
8. Day Habilitation: Farzana Karim ext. 1233
9. Respite: Johnny Nunez ext. 1222
10. After School Program - Supplemental Day Hab: Johnny Nunez ext. 1222

MANHATTAN

1. Social Skills Group – High Functioning Autism: Rocio Chavez ext.1414
2. Parent Support Group: Annie Washington ext. 1219
3. Early Intervention (In-Home): Rhodie Volpe ext. 1512
4. Early Intervention Service Coordination: Ceres Joy Respicio ext. 1252
5. Early Intervention Evaluations: Rhodie Volpe ext. 1512
6. SEIT contact: Rhodie Volpe ext. 1512
7. Family Reimbursement (Camp): Annie Washington ext. 1219
8. Family Reimbursement (Goods & Services): Annie Washington ext. 1219
9. Respite: Johnny Nunez ext. 1222
10. SETSS: Rhodie Volpe ext. 1512
11. CPSE Evaluations: Rhodie Volpe ext. 1512
12. Preschool Centerbased Openings: Larisa Muratov ext. 1500
13. Day Habilitation: Farzana Karim ext. 1233
14. After School Program - Waiver Respite: Johnny Nunez ext. 1222
15. Self Direction: Broker Services Kevin Martinez ext.1240
16. Day School: Larisa Muratov ext. 1513

LONG ISLAND

1. Sibling/Parent Support Group and Parent Training: Joan Moore ext. 1948
2. Day Habilitation: Farzana Karim ext. 1233
3. SEIT (Nassau only): Rhodie Volpe ext. 1512
4. Self Direction: Broker Services Kevin Martinez ext.1240
5. Respite: Johnny Nunez ext. 1222
6. Day School: Larisa Muratov ext. 1513

STATEN ISLAND

1. Self Direction: Broker Services Kevin Martinez ext.1240

WESTCHESTER

1. Self Direction: Broker Services Kevin Martinez ext.1240
2. Day School: Larisa Muratov ext. 1513



Quality Services for the Autism Community

Serving New York City and Long Island

QSAC has After School opportunities available in

Manhattan

Service:

- After school service provided by trained QSAC direct care staff
- Transportation is provided

Eligibility:

- Individual must reside in Manhattan with their family
- Individual must have a diagnosis of Autism Spectrum Disorder
- Individual must be waiver enrolled
- Individual must be over 8 year old

For more information please contact:

Contact: Celina Marin
Telephone: (718) 728-8476 x 1258
Fax: (718) 204-7570
Address: 25-09 Broadway
Astoria, NY 11106



CAREdesign

NEW YORK

making supports work

CAREdesign

NEW YORK



WELCOME TO CARE DESIGN NY

Who Are We?

We are a Care Coordination Organization (CCO) made up of over 60 agencies, in 30 counties, of New York State who came together to help individuals and families:

- GET GREATER ACCESS TO SERVICES
- GET MORE COMPLETE SERVICE COORDINATION BY COORDINATING HEALTH SERVICES, AS WELL AS THE CURRENT OTHER MEDICAID SERVICES
- INSURE THAT INDIVIDUALS AND FAMILIES GET WHAT YOU NEED, WHEN YOU NEED IT, ASSISTED BY THE SAME SERVICE COORDINATORS AND PROVIDER AGENCIES YOU DEPEND UPON NOW, PLUS A TEAM OF CLINICAL PROFESSIONALS AVAILABLE TO YOU AT ALL TIMES

Why Is This Change Being Made Now?

Both the Federal and State government agencies responsible for oversight of our programs believe that services funded by Medicaid are often too fragmented, and don't get individuals and families consistently what they need. So, they've asked all the provider agencies currently delivering MSC services to form these CCOs to better coordinate care. CARE DESIGN NY is one of the 6 groups throughout the state that will be designated to do this.

Our Beliefs and Values

We believe that all services available to families and individuals with developmental disabilities should be:

- Person centered
- Individualized
- Responsive to changing needs
- Culturally sensitive
- Community based
- Based on individual choice

At **CARE DESIGN NY** you can expect that we will help you and advocate for you to have access to the most integrated services and to have all the information you need to make informed choices for a meaningful life.



How Will We Achieve These Goals Together?

First, all the MSCS from all the agencies will be able to move over into **CARE DESIGN NY** at competitive pay and benefits, so that no one will have to make a choice to leave. So, the person you have now to depend on will still be at the center of our care coordination team.

Secondly, we will add medical and other specialists to their team to help individuals and families manage all their services in one place.

Third, we will work with all your existing service providers and you, to develop a Life Plan which will take into account not only current services, but the hopes and life goals of every individual.



What Will It Mean For Families and Individuals?

The change from MSC to CCO will not require any paperwork or change for individuals or families right away. After a month or so, you will have to agree that you want all the services being offered, much as you do now. But, when this enhanced service begins in July 2018 you won't have to do anything.

The Life Plan

Right now, all the services provided by Provider Agencies are driven by and contained in the Individualized Service Plan (ISP).

As we transition to care coordination, the ISP will be replaced by the Life Plan. The Life Plan is exactly what it sounds like. Your Care Manager (the new name for MSC) will sit with you and the important people in the individual's life to not only talk about services, but about all the things you would like to see in employment, relationships, housing and other activities, plus all the important oversight of health and wellness that CARE DESIGN NY will be responsible for helping you achieve.

More information on this is available from your service coordinator and your provider agency. In addition please visit www.caredesignny.org or call our office at (518) 235-1888.





“ At Care Design New York our only mission is assisting individuals with IDD and their families get the supports and services they want to live healthy, independent and fulfilling lives. ”

— JIM MORAN, CEO

*** New York Integrated Network**

- ANIBIC
- Access: Supports for Living
- Birch Family Services
- Brooklyn Community Services
- CP Metro Services
- Heartshare Human Services
- Human Care Services for Families & Children
- IAHD
- Lifespire
- S:US
- Westchester Jewish Community Services

*** Partnerships for Healthcare Solutions**

- ADAPT Community Network
- AHRC Nassau
- AHRC New York City
- AHRC Suffolk
- The ARC of Rockland
- The ARC of Westchester

*** Capital North Cares**

- AIM Services
- Adirondack Arc
- Catholic Charities Disabilities Services
- Citizen Advocates
- Clinton ARC
- COARC
- Community Work & Independence
- Liberty ARC
- Mountain Lake Services
- Saratoga Bridges
- Schenectady County ARC
- Schoharie County ARC
- The Alternative Living Group, Inc.
- The Arc Lexington
- The Arc of Rensselaer County
- Warren, Washington & Albany Counties ARC
- Wildwood Programs

*** Asian American Care Network**

- Chinese-American Planning Council, Inc.
- General Human Outreach in the Community

*** GOVERNING MEMBERS**

*** Hudson Valley Care Coordination Services**

- Ability Beyond
- Camp Venture
- Cardinal Hayes Home
- Gateway Community Industries
- Greystone Programs
- Jewish Family Service of Orange County
- Sullivan Arc
- The Arc Community League
- The Arc of Dutchess
- The Arc of Orange County
- The Arc of Putnam
- The Arc of Ulster-Greene
- Yedei Chesed

*** NYAEMP**

- Angels Unaware
- Child & Family Support Services
- Creative Lifestyles
- Eihab Human Services
- Harmony Services, Inc.
- Human First
- Long Life Information & Referral Network
- Metropolitan Development Center
- Rewarding Environments for Adult Living

MEMBERS

- Anderson Center for Autism
- Catholic Charities Neighborhood Services, Inc.
- Hawthorne Foundation, Inc.
- Jewish Union Foundation
- Long Island Advocacy Centers
- Mill Neck Services, Inc.
- Montefiore
- On Your Mark
- Otsar
- RCAPD
- Saint Regis Mohawk Tribe
- The Jewish Board of Family and Children's Services
- The Paul J. Cooper Center for Human Services
- The Salvation Army
- Vanderheyden
- Westchester Institute for Human Development

*** YAI**

BIRCH FAMILY SERVICES

ACROSS THE LIFESPAN



ESSENTIALS OF SOCIAL COMMUNICATION

Across the Lifespan presents a 12 week program on enhancing social skills development and peer to peer skills development for young adults with Autism Spectrum Disorder.

ESSENTIALS OF SOCIAL COMMUNICATION will utilize the PEERS® (Program for the Education and Enrichment of Relational Skills) Curriculum developed at UCLA by Dr. Elizabeth Laugeson and Dr. Fred Frankel.

Workshops will be held on Wednesday evenings at the Birch Administrative Office
2nd floor Training Room • 104 W 29th Street, New York City
5:30-7:00 pm

Three sets of workshops for the upcoming 2018 – 2019 year: September 19 – December 19; January 2 – March 27; and April 3- June 19. The program will be facilitated by Kristen Cortese.

For more information or to register please contact Kari-Ann Wanat Assistant Director of New Frontier at newfrontier@birchfamilyservices.org or 212-616-1845.

Social Skills Workshops are presented under the auspices of **ACROSS THE LIFESPAN**, a series of seminars and workshops for individuals on the autism spectrum and their families.



Birch Family Services is dedicated to supporting children, adolescents and adults with autism and other developmental disabilities as they learn, through our education and community programs, to live more independently, obtain competitive employment and become integral members of their communities. We are committed to empowering the individuals and families we support to realize their dreams and reach their fullest potential.

'Across The Lifespan' programming is funded through the City of New York's Autism Awareness Initiative

BIRCH FAMILY SERVICES

ACROSS THE LIFESPAN



Across the Lifespan presents a series of workshops focusing on the health and wellness of young adults with autism spectrum disorder. Workshops will focus on yoga and mindfulness, friendships and dating, and nutrition. Each series of workshops will be facilitated by experts in their content area and have two program assistants available.

The Health and Wellness Series will meet on Tuesday evenings starting September 18, 2018.*

YOGA AND MINDFULNESS: September 18 – October 23
FRIENDSHIPS AND DATING: November 6 – December 11
NUTRITION: December 18 – February 5 (no sessions on 12/25 & 1/1)

All workshops will be held at Birch's Administrative Office
2nd floor Training Room • 104 W 29th Street, New York City
5:30-7:00 pm

For more information or to register please contact Kari-Ann Wanat Assistant Director of New Frontier at newfrontier@birchfamilyservices.org or 212-616-1845.

*You can attend all three series of workshops or the series that interests you.

The Health and Wellness series is presented under the auspices of **ACROSS THE LIFESPAN**, a series of seminars and workshops for individuals on the autism spectrum and their families.



Birch Family Services is dedicated to supporting children, adolescents and adults with autism and other developmental disabilities as they learn, through our education and community programs, to live more independently, obtain competitive employment and become integral members of their communities. We are committed to empowering the individuals and families we support to realize their dreams and reach their fullest potential.

'Across The Lifespan' programming is funded through the City of New York's Autism Awareness Initiative

ABOUT BIRCH

For over 40 years, Birch Family Services has provided outstanding education, habilitation, and residential services to people with autism and other intellectual disabilities. **Birch helps 2,000 families daily** with the challenges they face in raising children and adults with special needs.

Birch offers services throughout New York City: Pre-School Special Education through age 5; Head Start and Day Care for typically-developing children and those with special needs; Special Education for children, adolescents, and young adults ages 5 through 21; Supervised Residences for adolescents and adults; Day Habilitation for graduates from the NYC Board of Education; New Frontier program to empower young adults on the autism spectrum; Family Support Services, including Community Habilitation; and a Training Institute for professionals throughout the tri-state area.

NEW FRONTIER PROGRAM

The Birch Family Services New Frontier program serves men and women on the autism spectrum who have aged out of school-based programs. These individuals represent the racial and ethnic makeup of New York City and come from a variety of socioeconomic backgrounds. Moreover, as many are either unemployed or have limited, sporadic, part-time employment when they enter the program, their individual incomes and assets place them well below the US poverty level. The New Frontier program provides a comprehensive network of services for these young adults in key areas such as:

- Employment and internships
- Independent living
- Social recreational activities
- Health and wellness training
- Personalized Life planning



Left: Marvin is a proud employee at The Intrepid Sea, Air and Space Museum

Right: New Frontier's Social Leisure Club at a movie outing

The program accounts for each person's strengths, interests and challenges, allowing our expert staff to create a **Personalized Life Plan** with actionable and attainable objectives to help the person achieve personal and professional goals. Major activities of this program include:

- Career counseling and workshops
- Job sourcing and competitive job placement
- Social group outings
- Family support groups
- Community living
- Travel training
- Service coordination



Left: Matt was successfully hired by Goldman Sachs after his training period

Right: David volunteered his time with Gallop New York

Birch has placed 85% of the participants in part-time or full-time competitive employment, established multiple organization and corporate partnerships, enabled each person's social growth through a variety of social activities throughout NYC including parks, museums and sporting events and provided a community of support for their families.

With 500,000 individuals on the spectrum, including 17,000 in NYC and adjacent counties, aging out of school programs in coming years, the New Frontier program is addressing a critical gap in services for this burgeoning population. For additional information or to apply please contact **Kari-Ann Wanat, Assistant Director, New Frontier at 212.616.1845** or **Lisa Sterrantino, Director, Community Services at 212.616.1877** or via email at newfrontier@birchfamilyservices.org



ABOUT BIRCH

For over 40 years, Birch Family Services has provided outstanding education, habilitation, and residential services to people with autism and other developmental disabilities. **Birch helps 2,000 families daily** with the challenges they face in raising children with special needs.

Birch offers services throughout New York City: Pre-School Special Education through age 5; Head Start and Day Care for typically-developing children and those with special needs; Special Education for children, adolescents, and young adults ages 5 through 21; Supervised Residences for adolescents and adults; Day Habilitation for graduates from the NYC Board of Education; New Frontier program to empower young adults on the autism spectrum; Family Support Services, including Medicaid Services Coordination; and a Training Institute for professionals throughout the tri-state area.

Day Services

Day Services provides habilitative supports to people with autism and intellectual disabilities. Day Services are customized and vary to support each person's preferences, interests and needs. Birch Family Services offers a range of opportunities designed to support individuals in the pursuit of personal, social and vocational skills needed to lead productive, inclusive and independent lives. The primary focus of day services is to develop and increase socialization, self-sufficiency, prepare people with work readiness skills, volunteerism, and community inclusion.



One of the key components of Day Services is ensuring the people we support are developing and enhancing skills they need to find competitive employment. Another key component that we offer is community inclusion. Individuals are encouraged to participate within their communities and are engaged in activities of choice. The individuals we support explore the diversity of various cultural and recreational aspects of New York City.

Locations

Brooklyn Day Services
145 East 98th Street
Brooklyn, NY 11235

Queens Day Services
153-17 Jamaica Avenue
Queens, NY 11432

For more information please contact

Bridgette Smith-Bailey
Senior Day Services Coordinator
646. 784.6200

Lisa Sterrantino
Director of Community Services
212.616.1877



ABOUT BIRCH

For over 40 years, Birch Family Services has provided outstanding education, habilitation, and residential services to people with autism and other intellectual disabilities. **Birch helps 2,000 families daily** with the challenges they face in raising children or young adults with special needs.

Birch offers services throughout New York City: Pre-School Special Education through age 5; Head Start and Day Care for typically-developing children and those with special needs; Special Education for children, adolescents, and young adults ages 5 through 21; Supervised Residences for adolescents and adults; Day Habilitation for graduates from the NYC Board of Education; New Frontier program to empower young adults on the autism spectrum; Family Support Services, including Community Habilitation; and a Training Institute for professionals throughout the tri-state area.

COMMUNITY BASED DAY HABILITATION

Birch Family Services offers comprehensive community based Day Habilitation services providing people opportunities to engage in volunteer and recreational activities in Queens, Brooklyn and Manhattan. Supports are customized to reflect each person's interests and strengths, while using the surrounding community as an educational and pragmatic resource. Community based Day Habilitation exposes participants to employment and volunteer opportunities.



All supports are outcome oriented, with a focus on the nature and quality of each person's experiences. Additionally, we ensure the people we support have the same degree of access to the community as others. Birch Family Services strives to support people to engage in community life, control personal resources and receive supports in the community, with a high degree of access.

Locations

Brooklyn Day Services
145 East 98th Street
Brooklyn, NY 11235

Queens Day Services
153-17 Jamaica Avenue
Queens, NY 11432

Manhattan Day Services
104 West 29th Street, 2nd Floor
New York, NY 10001

For more information please contact

Bridgette Smith-Bailey
Senior Day Services Coordinator
646.784.6200

Lisa Sterrantino
Director of Community Services
212.616.1877

Children/Education Services

Bronx, Brooklyn, Manhattan and Staten Island

- On-site therapeutic services
- Preschool services
- Universal Pre-K
- Integrated programming
- School-Age Program (Brooklyn Only)
- Early Childhood Direction Center (Brooklyn Only)

After-School Program

Bronx, Brooklyn and Manhattan

- Manhattan PS 138@30
- Brooklyn PS 396 & Annex at UCP
- Bronx P721x
- Transportation is provided

Day Habilitation

Day Programs available in Bronx, Brooklyn, Manhattan and Staten Island. Persons served must be age 18 or older to apply.

- OPWDD eligibility
- HCBS Waiver (if living at home with family)

Supported Employment

Available for Bronx, Brooklyn, Manhattan, and Staten Island residents. Employment services for adults with developmental disabilities.

Individualized Supports & Services (ISS)

OPWDD Housing Subsidy administered by ADAPT Community Network to assist individuals with achieving or maintaining independent living.

Technology Resource Centers/Techworks to Go Van

As the NYC centers of the NYS Assistive Technology Act program, TechWorks is a free, public service to help minimize and overcome barriers due to disabilities. From simple utensil grasps to complex communication devices, a myriad of options can be offered to create more independence. Contact us for our device demonstrations, short term loans, trainings and information and referral service.

SHARE Lending Library

Located in Staten Island, Brooklyn, Manhattan and the Bronx. Borrow books, adaptive toys and educational materials.

ACTION DAY CAMP

Three week summer day camp experience for young people who reside in Brooklyn, ages 13-21, live with a family member.

- Must be in OPWDD waiver

SPIRIT

Saturday Recreation Programs offered in Brooklyn, Manhattan, and Staten Island.

- Individuals between the ages of 13-29, DD eligible and live with a family member who resides in Manhattan, Bronx, Brooklyn or Staten Island. Transportation is provided

EXPLORE Club Disco

Once a month, Friday nights events held in Manhattan, Brooklyn and Staten Island (SI individuals must be HCBS waiver)

- 18 yrs or older, DD eligible and live with a family member who resides in Manhattan, Bronx and Brooklyn
- Wheelchair accessible. Transportation not provided
- Dinner and refreshments served

PROJECT CONNECT

Information and referral for supports and services offered in Brooklyn, Bronx, Manhattan, Queens and Staten Island.

1-877-827-2666, Projectconnect@adaptcommunitynetwork.org

www.adaptcommunitynetwork.org

Healthcare Services

Medical Services in Article 28 clinics located in Brooklyn and Bronx, serving residents of the five boroughs of New York City. Clinics are wheelchair accessible. Services include Family Medicine, Women's Health, Dental, Audiology Services, Psychiatry, Podiatry and Neurology.

Article 16 clinic offering Occupational Therapy, Physical Therapy, Speech Therapy and Mental Health Counseling to adults who are OPWDD eligible.

Residential Services

Community Living Options are located in Bronx, Brooklyn, Manhattan and Staten Island.

- Information about accessing residential opportunities
- Must be OPWDD eligible

Bronx Overnight Respite

Serving all five boroughs. Fully accessible site

- Transportation provided in Brooklyn, Manhattan, Queens and Staten Island
- 3yrs and older
- Must be waiver enrolled

Community Habilitation

An individualized, goal-orientated program serving Bronx, Brooklyn, Manhattan, and Staten Island.

- Must be waiver enrolled
- Must be living independently or with a family member
- Should be able and willing to follow and participate in their Community Habilitation Plan.

Doorways to Independence

Housing Assistance Services/Home Modifications

Available in the Bronx, Brooklyn, Manhattan, Staten Island and Queens

- Must be Family Support eligible
- Provides housing case management services, advocacy and referrals
- NYCHA application status checks and assistance processing requests for transfers
- Housing court advocacy and Legal Aid Society referrals
- Home assessments - a developed report on possible modifications and equipment to make the home more accessible.

Home Modifications

- Funds available for eligible individuals to modify their homes for necessary accessibility e.g. Ramps, Stairlifts.

Family Reimbursement

Funds available in the Bronx, Brooklyn, Manhattan, and Staten Island.

- \$500.00 limit for Brooklyn, Manhattan, Staten Island Special Brooklyn Camp Funds available
- Manhattan Durable Medical Equipment Funds available
- Funding available to assist families in paying for an item Medicaid or other funds will not cover
- Families can apply every 12 months

Family Connect

Family Connect Centers offer free weekly workshops, support services, and educational resources for New York City parents and families of children with disabilities. Through the Family Connect Centers, families are encouraged to learn, explore resources, and participate in improving outcomes for children with disabilities.

PROJECT CONNECT

Information and referral for supports and services offered in Brooklyn, Bronx, Manhattan, Queens and Staten Island.

1-877-827-2666, Projectconnect@adaptcommunitynetwork.org

www.adaptcommunitynetwork.org



Elmy's Special Services Inc.

NYS Licensed Home Care Agency in the heart of Brooklyn
Quality Health Care in the Comfort of Your Home

Providing the following:

Home and Community Support Services (HCSS)
Home Health Aides (HHA)

We Accept Private Pay and Medicaid

163 Van Buren Street Brooklyn New York 11221

Contact person: Michelle Barker

Phone: (929) 316-0958

MWBE

Email:
Michelle.barker@elmysspecialservices.org

Licensed by the
NYS DOH

New York State Department of Health



DECEMBER 13, 2018

Sign in Sheet

NAME	AFFILIATION	PHONE	EMAIL
Kathy Kelly	AHRC NYC	212 780-2724	Kathy.Kelly@ AHRCNYC.ORG
Margaret Puddington	parent	212 799 2042	margaret.puddington@ gmail.com
ANNROSE BACANI	PHP	917 576-3475	ABACANI@PHPCARES.ORG
Carol Lincoln	ADAPT COMMUNITY NETWORK	212-683- 6700 x1265	clincoln@adaptcommunitynetwork.org
CLARA CORDERO	AHRC	(212) 780-2387	Clara.Cordero@AHRCNYC.ORG
Matthew Tsang	YAI	212 273-6182	matthew.tsang@yai.org
Peggy DeMartino	BIRCH FAMILY SERVICES	212-616-1861	peggy.demartino@birchfamilyservices
Ryan Garofalo	IAC		RYANEIACNY.ORG
Robert Acevedo	DISABLED ACTION		rimm501@gmail.com
Celina Marin	QSAC	718-728- 8476	cmarin@qsac.com
Todd Brilliant	CDNY	646-491 6497 x202018	tbrilliant@caredesignny.org
Nicole Baker	MSCSC / MNSC Lifespire	212-645-7000	nbaker@lifespire.org
Silvia Verga	NY OBC	718-997-4855	silvia.verga@qc.cuny.edu
James Manfredini	IHPF	973-495-0551	James@ihpfny.org
Jackie Conzo	SNACK/PARENT	212 439 9996	jackie@SNACKNYC.COM
COURTRESSA OFFICE	Tri County Care	844 584 8400 x9221	C.OFFICE@TRICOUNTY.CARE.ORG
Lynn Decker	BCAN/CDNY	646 442 4188	ldecker@cidny.org
Jin Malley	Esperanza	212-928-5810	jmalley@esperanzacenter.com

