

Life Adjustment Center, Inc



Vacancy is available with in Life Adjustment SoHo Day Habilitation Center. Providing individuals with a wide variety of stimulating activities and support to further develop essential life skills.

- Fitness and wellness
- Computer instruction and technology
- Community integration
- Music therapy
- Arts and crafts
- Food preparation
- Individualized tasks
- Recreation

For more information, please contact, Mrs. Sabrina Robinson Day Habilitation Manager at (212-388-9156) or via email srobinson@lifeadjustmentcenter.com

DAY HABILITATION PROGRAM

PERSON-CENTERED CARE FOR ADULTS WITH DEVELOPMENTAL DISABILITIES

Sheltering Arms' Day Habilitation provides a safe environment with interactive activities which teach, engage, and evolve our clients so they might live more independently. We know education and turn challenges into the next great chapter of special lives.

ENROLL TODAY



In Manhattan
and the Bronx

CONTACT

Valorie Allston-Bell

Associate Director of Day Habilitation

Call (917)-658-2067 or vallston-bell@shelteringarmsny.org

INCLUSION

EDUCATION

PRODUCTIVITY

INDEPENDENCE

CURRENT PROGRAM OPENINGS



Quality Services for the Autism Community
Serving New York City and Long Island

Call (718) 728-8476 for inquiries

MAY 2019

QUEENS

QUEENS

1. Early Intervention (In-Home): Rhodie Volpe ext. 1512
2. Early Intervention Service Coordination: Ceres Joy Respcio ext 1252
3. Early Intervention (Center Based) : Joe Traegler 1521
4. Early Intervention Evaluations: Rhodie Volpe ext. 1512
5. SEIT: Rhodie Volpe ext. 1512
6. SETSS: Rhodie Volpe ext. 1512
7. Day Habilitation: Farzana Karim ext. 1233
8. Social Skills Group – High Functioning Autism: Dita DeSena ext.1418
9. Parent Training: Babina Chhetry ext. 1015
10. CPSE Evaluations: Rhodie Volpe ext. 1512
11. Supplemental Day Hab: Johnny Nunez ext. 1222
12. Non-Medicaid Service Coordination: Andrew Toscano ext. 1268
13. Self Direction: Broker Services Kevin Martinez ext.1240
14. Day School: Larisa Muratov ext. 1513
15. Respite: Johnny Nunez ext. 1222
16. Parent Support Group: Madelyn Wolfin ext. 1519
17. ABA Training: Madelyn Wolfin ext. 1519
18. ACCES-VR: Joseph Amodeo ext. 2016

BROOKLYN

BROOKLYN

1. Early Intervention (In-Home) contact: Rhodie Volpe ext. 1512
2. Early Intervention Service Coordination: Ceres Joy Respcio ext 1252
3. Early Intervention Evaluations: Rhodie Volpe ext. 1512
4. SEIT: Rhodie Volpe ext. 1512
5. SETSS: Rhodie Volpe ext. 1512
6. Non-Medicaid Service Coordination: Andrew Toscano ext. 1268
7. CPSE Evaluations: Rhodie Volpe ext. 1512
8. Preschool Centerbased Openings: Larisa Muratov ext. 1500
9. Housing Advocacy: Andrew Toscano ext. 1268
10. Self Direction: Broker Services Kevin Martinez ext.1240
11. Respite: Johnny Nunez ext. 1222
12. Day School: Larisa Muratov ext. 1513
13. ACCES-VR: Joseph Amodeo ext. 2016

BRONX

1. Day School: Larisa Muratov ext. 1513
2. SEIT: Rhodie Volpe ext. 1512
3. SETSS: Rhodie Volpe ext. 1512
4. Early Intervention (In-Home) : Rhodie Volpe ext. 1512
5. Early Intervention Service Coordination: Ceres Joy Respcio ext 1252
6. Early Intervention Evaluations: Rhodie Volpe ext. 1512
7. CPSE Evaluations: Rhodie Volpe ext. 1512
8. Day Habilitation: Farzana Karim ext. 1233
9. Respite: Johnny Nunez ext. 1222
10. Self Direction: Broker Services Kevin Martinez ext.1240
11. ACCES-VR: Joseph Amodeo ext. 2016

MANHATTAN

1. Social Skills Group - High Functioning Autism: Rocio Chavez ext. 1414
2. Parent Support Group: Annie Washington ext. 2621
3. Early Intervention (In-Home): Rhodie Volpe ext. 1512
4. Early Intervention Service Coordination: Ceres Joy Respcio ext. 1252
5. Early Intervention Evaluations: Rhodie Volpe ext. 1512
6. SEIT contact: Rhodie Volpe ext. 1512
7. Respite: Johnny Nunez ext. 1222
8. SETSS: Rhodie Volpe ext. 1512
9. CPSE Evaluations: Rhodie Volpe ext. 1512
10. Preschool Centerbased Openings: Larisa Muratov ext. 1500
11. Day Habilitation: Farzana Karim ext. 1233
12. After School Program - Waiver Respite: Johnny Nunez ext. 1222
13. Self Direction: Broker Services Kevin Martinez ext.1240
14. Day School: Larisa Muratov ext. 1513
15. ACCES-VR: Joseph Amodeo ext. 2016
16. Family Reimbursement (Camp): Annie Washington ext. 1219

LONG ISLAND

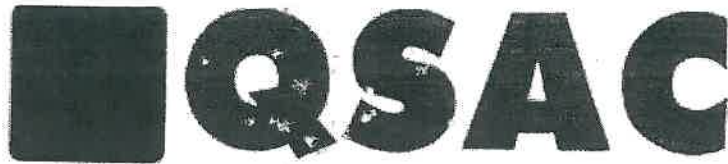
1. Sibling/Parent Support Group and Parent Training: Violeta Macias ext. 1719
2. Day Habilitation: Farzana Karim ext. 1233
3. SEIT (Nassau only): Rhodie Volpe ext. 1512
4. Self Direction: Broker Services Kevin Martinez ext.1240
5. Respite: Johnny Nunez ext. 1222
6. Day School: Larisa Muratov ext. 1513
7. ACCES-VR: Joseph Amodeo ext. 2016

STATEN ISLAND

1. Self Direction: Broker Services Kevin Martinez ext.1240
2. Day School: Larisa Muratov ext. 1513
3. ACCES-VR: Joseph Amodeo ext. 2016

WESTCHESTER

1. Self Direction: Broker Services Kevin Martinez ext.1240
2. Day School: Larisa Muratov ext. 1513
3. ACCES-VR: Joseph Amodeo ext. 2016



Quality Services for the Autism Community

Serving New York City and Long Island

QSAC has After School opportunities available in

Manhattan

Service:

- After school service provided by trained QSAC direct care staff
- Transportation is provided

Eligibility:

- Individual must reside in Manhattan with their family
- Individual must have a diagnosis of Autism Spectrum Disorder
- Individual must be waiver enrolled
- Individual must be over 8 year old

For more information please contact:

Contact: Celina Marin
Telephone: (718) 728-8476 x 1258
Fax: (718) 204-7570
Address: 25-09 Broadway
Astoria, NY 11106

For information about connecting to YAI services, go to yai.org/link
or call us at 212.273.6182 - age range and eligibility requirements vary

BROOKLYN

Ballet Yoga Group for Children on the Autism Spectrum
BCAP Weekend Recreation Program
Community Habilitation
Day Habilitation
Emergency Respite Reimbursement
Family Reimbursement
Independent Life Skills Program
Parent Training: Parents with Special Needs
Saturday Recreation Program
Social Skills Group for Children on the Autism Spectrum

QUEENS

Afterschool Program
Community Habilitation
Crisis Intervention
Emergency Respite Reimbursement
Family Reimbursement
Independent Life Skills Program
Non-Medicaid Skills Training
Overnight Respite
Parent Training: Sexuality
Parent Training: Parents with Special Needs

STATEN ISLAND

Parent Training: Behavior Management

BRONX

Adult Recreation
Club Fun
Community Habilitation
Day Habilitation
Friday Night Social
Independent Life Skills Program
In-Home Respite
Parent Training: Behavior Management

MANHATTAN

Community Habilitation
Crisis Intervention
Day Habilitation: Site-Based and Without Walls
Emergency Respite Reimbursement
Family Reimbursement
Free psychological, psychosocial, and autism evaluations
Holiday Respite
Independent Life Skills Program
In-Home Respite
Parent Training: Behavior Management
Parent Training: Parents with Special Needs
Parent Training: Sexuality
Skills Building: Transition to Independence for Young Adults on the Autism Spectrum
Social Skills for People with Autism
You and I: Social and Networking Skills

MULTI-REGION

International Academy of Hope (iHOPE)
NYSTART: Crisis Prevention and Response for People with I/DD (212.273.6300) - M, Bx, Qns
Self Direction Broker Services - M, Bx, Bk, Qns
Supported Employment Services
Manhattan Star Academy
Navigating the Service System Workshops: Learn about the I/DD System and Services
Travel Training: For teens and adults with disabilities and Train the Trainer Program

YAI and its network agencies also provide services in Long Island, Rockland, Westchester, and New Jersey

Visit yai.org for more information



Family Reimbursement Fund

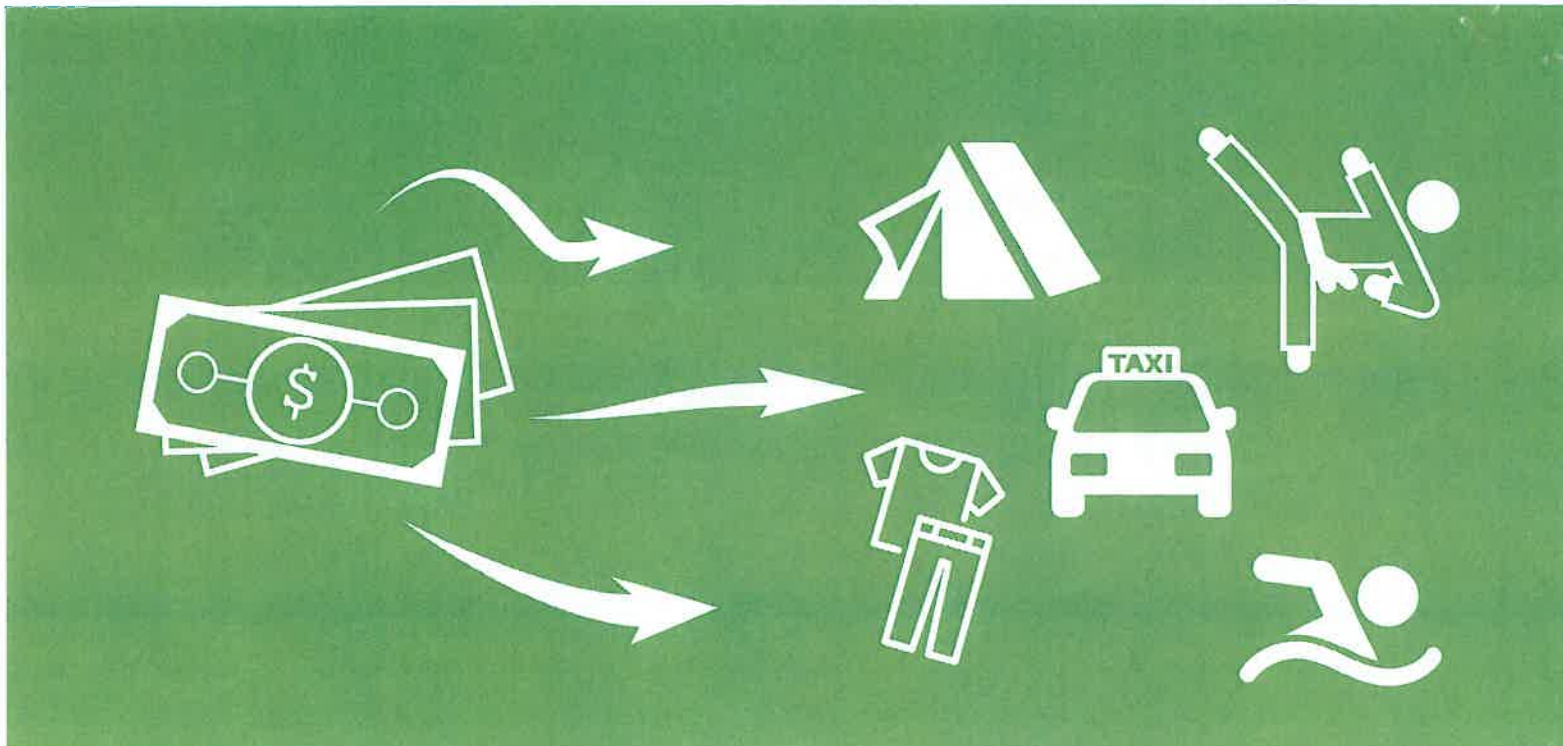
Reimbursement funding for eligible* families to help pay for goods and services which are not reimbursed or obtained through other sources.

Applications for family reimbursement are reviewed by a parent committee and original receipts for goods and services purchased are required. Special camp fund for Brooklyn residents.

For more information please contact

YAI LINK at **212.273.6182** or email **link@yai.org**

**OPWDD eligibility required; person with a disability must reside at home with their family in Brooklyn, Manhattan or Queens*



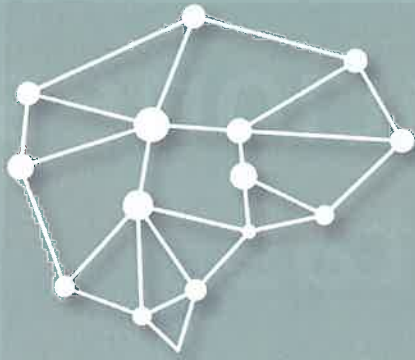
Fondos de Reembolso para las Familias

Los fondos de reembolso para familias* elegibles ayudan a pagar artículos o servicios que no son reembolsados u obtenidos a través de otros recursos.

Las aplicaciones para reembolso de familias son revisadas y aprobadas por el comité de padres. Es un requisito adjuntar los recibos originales de los artículos o servicios comprados. Los residentes de Brooklyn son elegibles para servicios de campamento.

Para mayor información, por favor contáctese con **YAI LINK** at **212.273.6182** o email **link@yai.org**

**Se requiere ser elegible por OPWDD; la persona con discapacidad debe residir en la casa con su familia en Brooklyn, Manhattan o Queens*



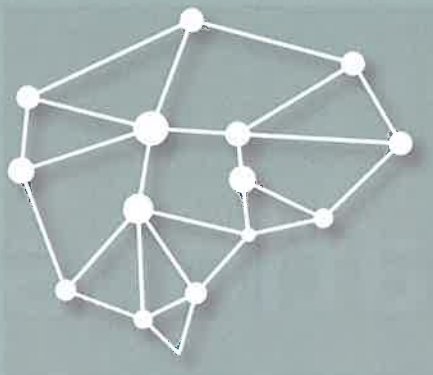
Free Evaluations

Free Psychological, Psychosocial and
Autism Assessments for Brooklyn,
Queens, and Manhattan residents*

*Eligibility criteria varies by borough.
Applicants must be *ineligible* for Medicaid.

For more information, contact YAI LINK
at **212.273.6182** or link@yai.org

*Funding provided by the NYC Department of Health and Mental Hygiene
and the NYS Office for People with Developmental Disabilities*



Evaluaciones Gratuitas

Evaluaciones psicológicas,
psicosociales y de autismo gratuitas
para residentes de los condados de
Brooklyn, Queens y Manhattan*

*El criterio de elegibilidad varía de acuerdo al condado.

Para más información, pónganse en contacto con
YAI LINK al **212.273.6182** o link@yai.org

*Financiado a través de NYC Department of Health and Mental Hygiene
y NYS Office for People with Developmental Disabilities*

EMERGENCY RESPITE FUND



**Funding for
eligible * families
to help pay for respite services
in an emergency situation.**

COVERED EMERGENCIES CAN INCLUDE:

- > medical hospitalization and recuperation
- > attending a funeral
- > family member sickness
- > assistance with challenging behaviors
- > other emergencies (please call)

FOR MORE INFORMATION,
call YAI LINK at 212.273.6182 or
email link@yai.org

*OPWDD eligibility required; must reside in Brooklyn, Queens or Manhattan

FONDOS PARA RESPIRO DE EMERGENCIA



Los fondos de reembolso para familias elegibles*

ayudan a pagar los servicios de respite en una situación de emergencia.

LAS EMERGENCIAS PUEDEN SER:

- > hospitalización médica y recuperación
- > asistencia a funeral
- > enfermedad de un miembro de la familia
- > asistencia en comportamientos desafiantes.
- > para otras emergencias (por favor llame)

PARA MAYOR INFORMACION, COMUNIQUESE CON:

YAI LINK al 212.273.6182

o email link@yai.org

*Se requiere ser elegible por OPWDD; la persona debe residir en Brooklyn, Manhattan o Queens.

IN CRISIS?



Getting help in a crisis.

Taking care of a family member with ID/DD is stressful at times. But when the family is overwhelmed, the right support can make all the difference.

WE PROVIDE EXPERT ASSISTANCE WITH:

SHORT-TERM CASE MANAGEMENT

Our social workers will help you apply for OPWDD eligibility and will help connect you with the supports you need.

CRISIS COUNSELING

Short-term counseling to help enhance coping skills and identify solutions to problems.

BEHAVIOR MANAGEMENT

We will empower and teach parents/caregivers how to address and modify challenging behaviors in the home.

MANHATTAN

212.273.6200

manhattancrisisintervention@yai.org

QUEENS

718.793.2182 X 4572 | 718.793.2182 x 4573 (español)

queenscrisisintervention@yai.org

yai.org/helpinacrisis

Must reside in Manhattan & Queens

YAI Seeing beyond disability.

¿EN CRISIS?

Obtener ayuda durante la crisis.



Cuidar a un familiar con ID/DD es a veces estresante, pero cuando la familia está estresada, el apoyo correcto puede hacer la diferencia.

NOSOTROS LE PROVEEMOS ASISTENCIA CON:

MANEJO DEL CASO A CORTO PLAZO

Nuestros trabajadores sociales le ayudaran a aplicar por la elegibilidad de OPWDD y lo conectarán con los servicios que usted necesita.

CONSEJERÍA EN MOMENTOS DE CRISIS

La consejería a corto plazo le ayuda a usar las estrategias para lidiar con el estrés e identificar soluciones a sus problemas.

MODIFICACIÓN DE LOS COMPORTAMIENTOS

Enseñamos y empoderamos a los padres/ cuidadores en su propia casa a manejar los comportamientos desafiantes.

MANHATTAN

212.273.6200

manhattancrisisintervention@yai.org

QUEENS

718.793.2182 X 4572 | 718.793.2182 x 4573 (español)

queenscrisisintervention@yai.org

yai.org/helpinacrisis

La persona debe residir en Manhattan o Queens.



Navigating the System for People with Developmental Disabilities

Learn about eligibility and access to services through NYS Office for People with Developmental Disabilities (OPWDD)

Workshops are open to people with I/DD, families, caregivers, and professionals

Workshops held at: 460 W. 34TH St, 11TH Fl, New York (Walk-ins welcome)

Morning (10am-12pm)

Wednesday, April 24
Wednesday, May 22
Wednesday, June 12

Evening (6pm-8pm)

Wednesday, May 15

Phone-In* (12pm-1pm)

*Registration required for access details

Wednesday, April 17

For more information or to register please visit:
yai.org/navigating (Walk-ins also welcome)

Questions? Contact **YAI LINK** 212.273.6182 or link@yai.org



Navegando el Sistema para Personas con Discapacidades del Desarrollo

Infórmese sobre elegibilidad y acceso a servicios a través de la Oficina para Personas con Discapacidades del Desarrollo (OPWDD por sus siglas en inglés)

Talleres están abierto a personas con I/DD, padres, familiares, proveedores de cuidados y profesionales

Lugar: 460 W. 34th Street, 11th Floor, New York

Miércoles 17 de abril 10am-12pm ,
Miércoles 15 de mayo 10am-12pm ,
Miércoles 19 de junio 10am-12pm ,

Para registrarse favor de visitar:

yai.org/navegando (Puede acudir sin previa registración)

Si tiene alguna pregunta puede llamar a la línea en español YAI
LINK 212.273.6182 or link@yai.org

Spring 2019



Project Grown-Up prepares parents for their children's developmental changes, relationship-building, sexual abuse prevention, and behaviors associated with the expression of sexuality.

OPEN TO MANHATTAN FAMILIES

Location: 460 W 34th St, 11th Fl, New York, NY 10001

Times: Morning: 10:30 am to 1:30 pm

Evening: 4:30 pm to 7:30 pm

Thursday, May 30 (Morning or Evening)

Puberty, Privacy, Personal Space, and Abuse Prevention

Thursday, June 6 (Morning or Evening)

Increasing Independence with Hygiene Tasks

Thursday, June 13 (Morning or Evening)

Relationships — Strangers, Acquaintances, Friends, Crushes, and Dating

Thursday, June 20 (Morning or Evening)

Sexual Consent and New York State Law

Thursday, June 27 (Morning or Evening)

Internet, Technology, and Social Media Safety

You And I : A Social Skills Training & Networking Program



If you are over the age of 18 and live at home with your family in Manhattan you are eligible for this program! The You and I Program is designed to provide you with:

The opportunity to meet new people and have more meaningful and satisfying relationships.

Groups known as “Getting to Know You” socials, meet for 3 hours on the first Friday of every month. Socials provide a safe and supportive environment for socialization, making new friends and exploring the potential for dating and relationships.

At each social you will be able to attend classes designed to help you develop some new social skills, and fine tune some old ones. After attending these classes everyone will get a chance to practice, as they talk, laugh, and dance the night away with other You And I members.

We are committed to providing you with a number of fun ways to meet new people in a safe and supportive environment, while helping you learn some new ways to experience and enjoy your life. The rest is up to you!

For more information visit yai.org/you-and-i OPWDD eligibility is required

To apply, contact Connie Senior at 212-273-6202. or connie.senior@yai.org.



Seeing beyond disability.

TRAINING FOR CAREGIVERS OF PEOPLE WITH INTELLECTUAL AND DEVELOPMENTAL DISABILITIES

BAGELS AND BEHAVIOR MANAGEMENT

MONDAYS: April 29 to June 24
460 West 34th Street
10:00 AM- 1:00PM

Respite available

Join **PROJECT GROW** Today!

PRE-REGISTRATION IS REQUIRED

Person must reside at home with family
in Bronx or Manhattan.

New York State Office for People with
Developmental Disabilities (OPWDD)
Eligibility Required.

For more information and to register call
212.273.6259 or email projectgrow@yai.org.

YAI Seeing beyond disability.



For young adults, ages 17 - 21 on the autism spectrum.

Yoga & Mindfulness

Develop and practice tools to reduce stress.

Engage in calming physical and mental activities that promote movement, relaxation, self-awareness, and socialization.

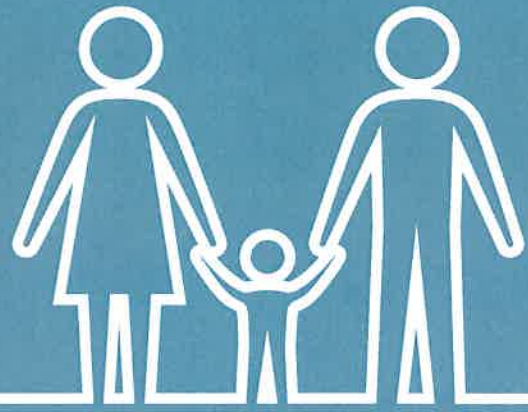
Group is available in the evening.

For more information, please call:

YAI LINK at [212.273.6182](tel:212.273.6182) or email link@yai.org

Must meet NYC Department of Health and Mental Hygiene program criteria.

PWSN



Parents With Special Needs

PWSN empowers parents with developmental disabilities*, through direct support and skills training, to become more independent and successful parents.

One-on-one home and community based training and support groups focus on:

- Parenting and Family Empowerment
- Skill Training: Infant Care, Behavior Management, Safety Awareness and Money Management
- Self Advocacy and Community Resources
- Exploring Independence vs. Interdependence
- Enhancing Parental Self Esteem and Confidence

**Parents must reside in Queens, Brooklyn or Manhattan, meet OPWDD eligibility and have parental rights*

For more information visit yai.org/PWSN
Or contact PWSN at
718.793.2182 x 4995 or leshea.jones@yai.org

Children/Education Services

Bronx, Brooklyn, Manhattan, Queens and Staten Island

- On-site therapeutic services
- Preschool services
- Universal Pre-K
- Integrated programming
- School-Age Program (Brooklyn only)
- Early Childhood Direction Center (Brooklyn only)

After-School Program

Bronx, Brooklyn and Manhattan

- Manhattan PS 138@30
- Brooklyn PS 396 & Annex at ADAPT Community Network
- Bronx P721x
- Transportation is provided.

Day Habilitation

Day Programs available in Bronx, Brooklyn, Manhattan and Staten Island. Persons served must be age 18 or older to apply.

- OPWDD eligibility
- Must be waived/enrolled (if living at home with family).

Supported Employment

Service is available to Bronx, Brooklyn, Manhattan and Staten Island residents. Employment services and supports for people with disabilities. Waiver eligibility is preferred.

Family Connect

Family Connect Centers offer free weekly workshops, support services, and educational resources for New York City parents and families of children with disabilities. Through the Family Connect Centers, families are encouraged to learn, explore resources, and participate in improving outcomes for children with disabilities.

Technology Resource Centers/Techworks to Go Van

As the NYC centers of the NYS Assistive Technology Act Program, TechWorks is a free, public service to help minimize and overcome barriers due to disabilities. From simple utensil grasps to complex communication devices, a myriad of options can be offered to create more independence. Contact us for our device demonstrations, short-term loans, trainings and information and referral service.

SHARE Lending Library

Located in Staten Island, Brooklyn, Manhattan and the Bronx. Borrow books, adaptive toys and educational materials.

ACTION DAY CAMP

Three-week summer day camp experience for young people who reside in Brooklyn, ages 13-21, and live with a family member.

- OPWDD and Waiver-enrollment required

SPIRIT

Saturday Recreation Programs offered in Brooklyn, Manhattan and Staten Island.

- Individuals between the ages of 13-29, OPWDD eligible and live with a family member who resides in Manhattan, Bronx, Brooklyn or Staten Island. Transportation is provided.

EXPLORE Club Disco

Once a month, Friday night events held in Manhattan, Brooklyn and Staten Island (SI individuals must be HCBS waiver).

- 18 years or older, OPWDD eligible and live with a family member who resides in Manhattan, Bronx and Brooklyn.
- Wheelchair accessible. Transportation not provided.
- Dinner and refreshments served.

Individualized Supports & Services (ISS)

OPWDD Housing Subsidy administered by ADAPT Community Network to assist individuals with achieving or maintaining independent living.

PROJECT CONNECT

Information and referral for supports and services offered in Brooklyn, Bronx, Manhattan, Queens and Staten Island.

1-877-827-2666, Projectconnect@adaptcommunitynetwork.org

www.adaptcommunitynetwork.org

Healthcare Services

Medical Services in Article 28 clinics located in Brooklyn and Bronx, serving residents residing in the five boroughs of New York City. Clinics are wheelchair accessible. Services include Family Medicine, Women’s Health, Physiatry, Dental, Audiology, Podiatry and Neurology.

Article 16 clinic offers services in all five boroughs. Services include Occupational Therapy, Physical Therapy, Speech Therapy and Mental Health Counseling for adults (18+) who are OPWDD eligible.

Residential Services

Community Living Options are located in Bronx, Brooklyn, Manhattan and Staten Island.

- Information about accessing residential opportunities
- OPWDD eligibility is required

Bronx Overnight Respite

Open to all five boroughs. Fully accessible site.

- Transportation provided in Brooklyn, Manhattan, Queens and Staten Island.
- 3 years and older
- Waiver enrollment is required

Community Habilitation

Individualized service focused on personal goal attainment. Services are offered in the Bronx, Brooklyn, Manhattan and Staten Island.

- Waiver enrollment is required.
- Must be living independently or with a family member.
- Should be able and willing to work on self-identified valued outcomes.

Housing Assistance Services

Assists persons with disabilities and their families navigate New York City’s vast housing systems while linking people with service and supports to navigate through housing challenges.

- Services available to people who are OPWDD eligible and living with family.
- Offers advocacy support, information and referrals on such topics as:
- Eviction prevention, housing court, rent arrears
- Affordable housing, low income and accessible housing (NYCHA, Subsidized Housing, Housing Connect/Lottery)

Doorways to Independence: Home Modifications

A program focused on assisting persons with disabilities in addressing their home accessibility needs.

- Funding available to cover the cost of wheelchair ramps, stairlifts, accessible bathrooms, widening of doors, grab bars, railings, and other necessary modifications.
- Home Assessments conducted by an Accessibility Consultant to determine feasibility of the requested modification and for scope of work development.
- Persons with permanent physical disabilities, elderly, and medically frail are eligible to apply.

Family Reimbursement

Funds available in the Bronx, Brooklyn, Manhattan and Staten Island.

- \$500.00 limit for Brooklyn, Manhattan, Staten Island
- Camp Funds available in Bronx, Brooklyn, Staten Island
- Durable Medical Equipment Funds available
- Funds available to cover items denied by Medicaid or other funding sources.
- Families can apply once per fiscal year (July 1- June 30).

PROJECT CONNECT

Information and referral for supports and services offered in Brooklyn, Bronx, Manhattan, Queens and Staten Island.

1-877-827-2666, Projectconnect@adaptcommunitynetwork.org

www.adaptcommunitynetwork.org

ADAPT

COMMUNITY NETWORK

[we change]

Family Reimbursement

ADAPT Community Network's Family Reimbursement program provides funds to individuals with disabilities and their families. These funds cover the cost of goods/services that are not obtainable through other sources ie. Medicaid, medical insurance, etc.

Items such as:

- Clothing
- Respite Care
- Beds
- Dressers
- and More...

Also, Durable Medical Equipment, such as;

- Wheelchair parts/repair
- Shower chairs
- Hospital beds
- Commodes
- Walkers



If the request is for medical or adaptive equipment, medical documentation supporting a need for the equipment must be included, such as a letter from the PT, or OT (and must include signature and license #). You must also show proof that Medicaid or your medical insurance does not cover the item.

Families can apply once per fiscal year, July 1st – June 30

For more information call **877-827-2666**

ADAPT Community Network Family Reimbursement

80 Maiden Lane, 8th Fl, New York, NY, 10038

projectconnect@adaptcommunitynetwork.org

www.adaptcommunitynetwork.org

ADAPT [we support] COMMUNITY NETWORK



ADAPT Community Habilitation Program

The **Community Habilitation Program** at ADAPT Community Network is a person-driven, outcome-based service tailored to the participant's needs, wants, and preferences through the implementation of valued outcomes and goals.

We work with program participants, their families or a chosen network of support to create and monitor comprehensive habilitative plans. We empower each individual to obtain their goals in order to increase their independence and ability to be active participants in their community. ADAPT provides one on one assistance to each participant, whether they live in a family setting or independently.

The Community Habilitation services include: adaptive skill development, training and support for independence in living and travel, adult education, development of social and informed choice skills, self-advocacy, and guidance accessing one's community.

How to Access Community Habilitation?

To receive services from the **ADAPT Community Habilitation Program**, you must be eligible for Waiver Services.

For more information and to apply, please contact:
Project Connect at 1-877-827-2666 or projectconnect@adaptcommunitynetwork.org

Doorways to Independence



ADAPT HOME MODIFICATION PROGRAM

Through the Doorways to Independence program, ADAPT Community Network provides home modification services to persons with disabilities, the elderly, and the medically frail. Funding is available to cover the cost of modifications that will improve physical access and safety within the home. Home owners, co-op owners, and renters may qualify for assistance. Home Modifications may include, but are not limited to: **wheelchair ramps, stair-lifts, grab bars, railings, widening of doorways, safety fences, wheelchair accessible bathrooms, and more...**



WHAT WE OFFER

Full project coordination including:

- Home assessments
- Scope of work development
- Obtaining estimates from qualified and licensed vendors/contractors
- Project management

ACCESS TO HOME GRANT

- Service available in all five boroughs
- Applicant could be living independently or with family
- Must have a permanent physical disability or have substantial difficulty with ADL's due to aging
- Total household income may not exceed 80% of area median income
- Allocations of funds may vary, however the project cap is 25k



FAMILY SUPPORTS AND SERVICES GRANT

- Service available for **Queens** and **Staten Island** residents
- Applicant must be residing with family
- Must be diagnosed with a developmental disability and be approved for OPWDD services
- There is no income requirement to qualify for this assistance
- Allocations of funds may vary, however project cap is 6k



ADAPT Housing Assistance Program

The **ADAPT Housing Assistance Program** helps individuals living with disabilities and their families navigate New York City's vast housing system and live as independently as possible.

ADAPT offers advocacy support, information, legal guidance and referrals for individuals seeking accessible and affordable housing. We also provide access to home modification funds.



What We Offer:

- Housing and accessibility rights education
- Eviction prevention and housing court assistance
- Landlord and tenant negotiations
- Assistance with affordable, low-income and accessible housing (Section 8 & NYCHA transfers)
- Home modification funds



What's Needed to Apply:

In order to qualify for the Housing Assistance Program, at least one individual in the household must have a documented developmental or neurological disorder.

You should also have an **OPWDD eligibility letter** or a **letter** stating that you have gone through the **OPWDD Front Door** program.

Please note that ADAPT's Housing Assistance Program doesn't provide direct financial assistance nor do we rent apartments.

For more information, please contact **PROJECT CONNECT**, projectconnect@adaptcommunitynetwork.org or **1.877.827.2666**.



CURRENT OPENINGS

Providing culturally competent, Lifespan Services to New Yorkers with Disabilities Since 1978

May 2019

Autism Initiative

- Ongoing support & training to parents of children on the autism spectrum.
- Individualized arts program for children on the spectrum. OPWDD eligibility not required.

Family Support Education Advocacy

- Offers training to parents, and helps them develop advocacy skills, and offers consultation.
- Intensive one-to-one case assistance.
- OPWDD eligibility: Manhattan Families.

Family Support Case Management

- Non-Medicaid case management for Manhattan, Brooklyn, Bronx, and Queens.
- Assistance with Medicaid enrollment, referrals, coordination & linkage to service.

Group Day Habilitation

- Fostering acquisition, maintenance, & enhancement of socialization skills, greater independence, and personal choice making.

UPLIVING (Day Hab Without Walls)

- Services entirely provided in the community; beginning day at a location or with an event of the individual's preference
- Focused on community integration through individualized daily planned events.

ACCES – VR

- Directed at maintaining employment and supporting independent living through training, vocational rehabilitation, and career development for students up to 21.

CAMINOS (Pathways to Employment)

- Prepares individuals for job seeking opportunities, enhancing vocational interests and skills.
- Training Duration: 1 year.

Supported Employment (SEMP Extended)

- Job development, placement, and job coaching.
- Exposure to targeted job skills training, developing resume, job pairing, and interviewing skills.

Pre-Vocational Services

- Career exploration & discovery, paving the way for identifying employable skills.
- Small group exposure, volunteering and workplace environment.

Free Evaluation

- Free psychological & psychosocial evaluations for Manhattan residents with no Medicaid.
- For those seeking eligibility for OPWDD related services.

Family Reimbursement Program

- A one-time cash grants of up to \$500 to relieve financial hardship for families in Manhattan, Bronx, and Queens. Reimbursement for services or items.

Housing Advocacy

- Advocacy for low-income housing for fellow New Yorkers with developmental disabilities
- Deals with evictions, repairs & court support services

Community Habilitation

- Community habilitation assistance to individuals with disabilities that fosters relationship building and active community participation.

In-Home Respite

- Day and weekend respite services.
- Provides family a critical break while providing personal care for participants.

Overnight Respite Program

- Overnights & Emergency respite care for people with significant disabilities across all NYC boroughs.
- Provides relief for caregivers while preserving an individual's continued community living.



Sinergia prides itself in providing culturally competent lifespan services to New Yorkers with Disabilities. Since 1978, we continue to work with underserved families, many with limited English proficiency, either at the risk of homelessness or struggling with insecure housing and income, lack of services and discrimination based on ethnicity, language status, immigration status, gender or poverty.

Call or visit us to learn more about what we do.

Contact Intake: 212.643.2840 Ext 336

2082 Lexington Avenue,
4th Floor · New York, NY 10035
TEL 212.643.2840
www.sinergiany.org/



Providing Multicultural, Lifespan Services for People with Disabilities

Family Care Program

Family Care program provides community-based residential housing in certified private homes for individuals with developmental disabilities by providing the support, guidance and companionship of a family; the program fosters a caring and stable home environment to individuals of all ages.

Family Care uses heads of households which are recruited, trained and certified to provide residential services. Anyone who is at least 21 years of age, can become family care providers, they can be married or single; men or women; owners or renters of a house, or apartment. Prior experience with individuals with developmental disabilities is not necessary.

Individuals in Family Care are served by a team which is composed of a Family Care coordinator, FC Home Liaison, Family Care Provider(s), Medicaid Service Coordinator(s) and a nursing team which provides medical care and intervention to individuals in the program. The team may also include a representative of day or education services and the individual's advocate and/ or family member.

For more information, please call 212-643-2840

Kirzis Lugo
Intake Specialist
Sinergia Inc.,
2082 Lexington Ave. - 3rd Floor
New York, NY 10035
Tel:(212)643-2840 Ext: 336
Fax:(212)643-2871
klugo@sinergiany.org

Kenia Peralta
Family Care Coordinator
Sinergia Inc.,
2082 Lexington Ave. - 3rd Floor
New York, NY 10035
Tel:(212)643-2840 Ext: 334
Fax:(212)643-2871
kperalta@sinergiany.org

SINERGIA, Inc.

2082 Lexington Avenue, 4th Floor
New York, NY 10035
Phone: 212-643-2840
www.sinergiany.org





Providing Multicultural, Lifespan Services for People with Disabilities

Cuido Familiar

EL programa de cuidado familiar proporciona viviendas comunitarias en los hogares certificados para individuos con discapacidades del desarrollo. Proporcionando el apoyo, la orientación y la compañía de una familia; el programa promueve un ambiente hogareño estable y cuidando a personas de todas las edades.

El Cuidado Familiar utiliza jefes de hogar que son reclutados, entrenador y certificados para proveer servicios residenciales. Cualquier persona que sea por lo menos 21 años de edad, puede convertirse en los proveedores de cuidado de la familia, pueden ser casado o soltero; hombres o mujeres; los propietarios o inquilinos de una casa o apartamento. No es necesario experiencia previa con personas con discapacidades del desarrollo.

Las personas en el cuidado de la familia son atendidas por un equipo que incluye el coordinador de atención familiar, proveedoras de cuidado familiar, Coordinador de servicios de Medicaid y un equipo de enfermería que proporciona atención médica y la intervención a los individuos en el Programa.

Para mas información por favor comuníquese con nosotros al 212-643-2840

Kirzis Lugo
Intake Specialist
Sinergia Inc.,
2082 Lexington Ave. - 3rd Floor
New York, NY 10035
Tel:(212)643-2840 Ext: 336
Fax:(212)643-2871
klugo@sinergiany.org

Kenia Peralta
Family Care Coordinator
Sinergia Inc.,
2082 Lexington Ave. - 3rd Floor
New York, NY 10035
Tel:(212)643-2840 Ext: 334
Fax:(212)643-2871
kperalta@sinergiany.org

SINERGIA, Inc.

2082 Lexington Avenue, 4th Floor
New York, NY 10035
Phone: 212-643-2840
www.sinergiany.org





Providing Multicultural, Lifespan Services for People with Disabilities

Free Evaluations

- Psychological and Psychosocial evaluations provided to **Manhattan residents** of all ages without Medicaid who are seeking eligibility for OPWDD programs and services
- Medicaid recipients may qualify based on an urgent need with approval by OPWDD
- Comprehensive Autism evaluations are available when requested by OPWDD for eligibility

For more information, please contact us at 212-643-2840

Kirzis Lugo
Intake Specialist
Sinergia Inc.,
2082 Lexington Ave. - 3rd Floor
New York, NY 10035
Tel:(212)643-2840 Ext: 336
Fax:(212)643-2871
klugo@sinergiany.org

Johanna Santana
Evaluation Coordinator
Sinergia Inc.,
2082 Lexington Ave. - 3rd Floor
New York, NY 10035
Tel:(212)643-2840 Ext: 302
Fax:(212)643-2871
jsantana@sinergiany.org

SINERGIA, Inc.

2082 Lexington Avenue, 4th Floor
New York, NY 10035
Phone: 212-643-2840
www.sinergiany.org





Providing Multicultural, Lifespan Services for People with Disabilities

Evaluaciones Gratuitas

- Evaluaciones Psicológicas y Psico-Sociales para personas que viven en Manhattan, de todas las edades, que no tengan Medicaid y quieran obtener los programas y servicios de OPWDD
- Evaluaciones estarán disponibles para personas que tengan Medicaid, pero solamente en casos urgentes y con aprobación de OPWDD
- Evaluaciones comprensivas de Autismo estarán disponibles cuando sean pedidas por OPWDD para su elegibilidad.
- Las Evaluaciones pueden hacerse en casa y los fines de semana!

Para mas información por favor comuniquese con nosotros al 212-643-2840

Kirzis Lugo
Intake Specialist
Sinergia Inc.,
2082 Lexington Ave. - 3rd Floor
New York, NY 10035
Tel:(212)643-2840 Ext: 336
Fax:(212)643-2871
klugo@sinergiany.org

Johanna Santana
Evaluation Coordinator
Sinergia Inc.,
2082 Lexington Ave. - 3rd Floor
New York, NY 10035
Tel:(212)643-2840 Ext: 302
Fax:(212)643-2871
jsantana@sinergiany.org

SINERGIA, Inc.

2082 Lexington Avenue, 4th Floor
New York, NY 10035
Phone: 212-643-2840
www.sinergiany.org





General Human Outreach

in the Community Incorporated

125-10 Queens Blvd., Suite 2705 Kew Gardens NY 11415

Day Habilitation Without Walls

Day Hab Without walls is a community based program that provides training and skills development based on each person's capabilities, needs, desires, and preferences in a person-centered environment. Each individual's weekly schedule is based on individual's preference and personal goals to promote community inclusion and increase independence in daily living skills. Individuals learn how to enhance their socialization, communication and travel training skills while utilizing community resources. Community integration includes visits to libraries, museums, parks, malls, restaurants, bowling, movies, volunteer sites, and more. Individuals are provided with opportunities for computer training and job readiness skills building through a variety of volunteer sites.

Admissions Criteria:

- 18 years old and older
- Diagnosis of intellectual or developmental disability
- Individuals transitioning out of school settings
- Willingness to be travel trained
- Medicaid and HCBS waiver eligible

Program Director: Carrie Peterson-Pierce

For further information, please contact:

Carrie Peterson-Pierce at (718) 307-6586, (929) 270-2044 or cpierce@ghoinc.org

Pat Liu Chang at (718) 307-6563 for information in Chinese

Daesil Choi (최대실) at (718) 307-6570 for information in Korean

General Human Outreach In the Community Incorporated

Presents

Job Training Programs



"E.T.P."

&

"Pathway to Employment"

&

"Supported Employment"



If interested please contact:

Employment Program Sr. Supervisor: Yvonne Tramble

Email: ytramble@ghoinc.org Phone: 718-261-6552 ext. 2040

Or Assistant Supervisor: Steven Inesyan at 718-307-6583

有關此項職業訓練服務, 中文請電劉小姐 (Pat Liu Chang) 718-307-6563

직업 프로그램에 대한 자세한 문의는, 한국어 담당 (Daesil Choi) 718-307-6570



Office for People With
Developmental Disabilities

1

Manhattan Developmental Disability (DD) Council

Allison McCarthy
Office for People with Developmental Disabilities
May 9, 2019

Agenda Highlights

- Vision for Managed Care Transition
- Community First Choice Option (CFCO) Overview
- Intellectual and Developmental Disabilities (I/DD) Health Home Progress Report



VISION FOR MANAGED CARE




Transition Phases

	<p>I/DD Health Homes (I/DD HH)</p> <ul style="list-style-type: none"> • Providing enhanced care coordination and management to individuals with I/DD
	<p>Provider Led Early Adopter Mainstream Managed Care (MMC)</p> <ul style="list-style-type: none"> • Provider led Early Adopter plans will gain experience coordinating care for individuals with I/DD by providing medical coverage and certain State Plan services to enrollees
	<p>SIP- PL Transition individuals with I/DD and DD services into managed care</p> <ul style="list-style-type: none"> • The phasing-in of OPWDD services into managed care will be gradual and detailed in the SIP-PL Requirements Document



Provider Led Early Adopters Mainstream Managed Care (MMC)

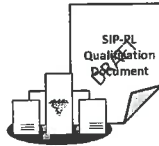
Early Adopters	Description	Covered Services
	<ul style="list-style-type: none"> • Provider-led MCOs that have extensive experience coordinating care and delivering DD services to individuals with I/DD in New York State • Provides an early framework to help provider-led MCOs gain experience serving individuals with I/DD managing Mainstream Managed Care benefits • It is anticipated that Early Adopters will become SIP-PLs 	<ul style="list-style-type: none"> • Mainstream Managed Care(MMC) Benefits: <ul style="list-style-type: none"> • Medical services • <u>CFCO services</u> • Other covered Medicaid State Plan services

SIP-PL Covered Services



Medical/Health	CFCO State Plan Services	Care Management	Other State Plan Supports	OPWDD Services
<ul style="list-style-type: none"> • Inpatient Hospital • Preventive and Outpatient Services • Lab and Radiology • Pharmacy • Therapy Services • Emergency Services • Dental • Vision • Clinic services 	<ul style="list-style-type: none"> • Assistive Technology • Vehicle Adaptations • Community Transitional Services • E-meds • Community Habilitation • Personal Care • Home Health Care Aide • Consumer-Directed Personal Assistance • Personal Emergency Response (PERS) • Home Delivered Meals • Congregate Meals • Moving Assistance • DME 	<ul style="list-style-type: none"> • SIP-PL I/DD Health Home Care Management 	<ul style="list-style-type: none"> • Long/Short Term Supports and Services • Outpatient and Inpatient Behavioral Health and Substance Use Disorder (SUD) Services • DME/Products/Supplies • Long Term Residential Placement 	<p style="text-align: center;">Phased-in Over Time</p> <p style="text-align: center;">1915(c) Waiver</p> <p>1915(c) Waiver Services, such as:</p> <ul style="list-style-type: none"> • Self Direction • Community Habilitation • Pathway to Employment, • Prevocational Services • Residential and Day Habilitation • Supported Employment (etc.) <p>Other Benefits, including:</p> <ul style="list-style-type: none"> • ICF/IID • Article 16 Clinics

SIP-PL Qualification Document



Qualification Document

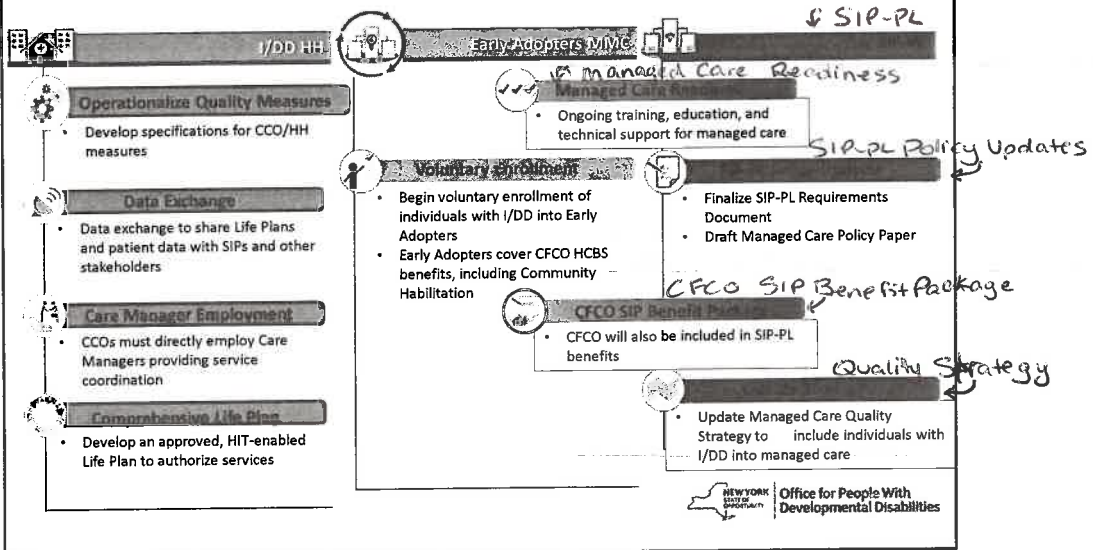
“Medicaid Managed Care Organization I/DD System Transformation to Serve Individuals and/or Developmental Disabilities in Specialized I/DD Plans- Provider Led (SIPs-PL)”
(Draft)

Key Objectives of the Document

- Posted to the DOH Website at: https://www.health.ny.gov/health_care/medicaid/program/medicaid_health_homes/idd/draft_idd_1115_waiver.htm
- Identifies the legal authorities to allow the DOH and OPWDD to implement and oversee implementation of managed care for DD services
- Details the required standards and conditions to becoming a specialized managed care plan serving individuals with I/DD
- Outlines an early framework to integrate individuals with I/DD and DD services into managed care



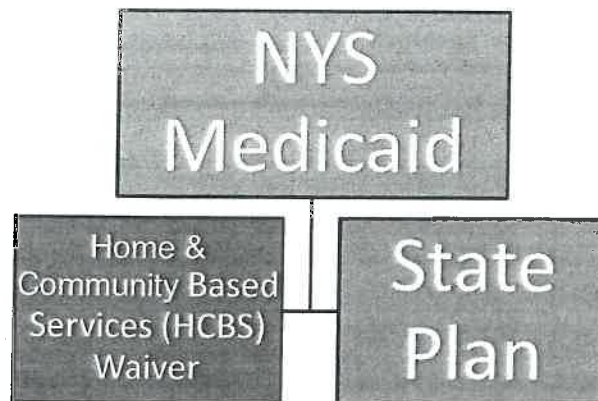
Managed Care Roadmap: Short Term



COMMUNITY FIRST CHOICE OPTION



Understanding the Medicaid Program




Waiver vs. State Plan

HCBS Waiver	State Plan
<ul style="list-style-type: none"> • Allows States to waive certain Medicaid program requirements • Can be "targeted" -- Not available to all Medicaid individuals • Time limited - Must be renewed • Capped number of recipients 	<ul style="list-style-type: none"> • Services must be available to all eligible Medicaid enrollees • Do not expire • No cap on the number of recipients



What is CFCO?

 CFCO State Plan	CFCO Service Delivery	CFCO Eligibility	CFCO in Managed Care
<p>Description</p> <ul style="list-style-type: none"> • CFCO is an optional State Plan authority allowing States to offer home and community-based services to eligible Medicaid enrollees • Expands access to attendant services and supports to help with everyday activities 	<ul style="list-style-type: none"> • Consumer controlled, personal assistance services/ supports for Activities of Daily Living (ADLs) and Instrumental Activities of Daily Living (IADLs) and health-related tasks • No "Budget Authority" • Services must be provided to all Medicaid-eligible populations (DOH, OMH, and OPWDD) • Provided in the community 	<p>Available to individuals who fulfill all of the following criteria:</p> <ul style="list-style-type: none"> ○ Eligible for Medicaid with "regular rules" ○ Have an institutional level of care as determined by the functional assessment used by that population ○ Are living in their own home or a family member's home 	<p>Many CFCO Services are already included in the managed care benefit package offered to eligible enrollees:</p> <ul style="list-style-type: none"> ○ Consumer Directed Personal Assistance ○ Home Health Aide ○ Homemaker/Housekeeper (Personal Care Level 1) ○ Personal Care Level 2 ○ Personal Emergency Response System

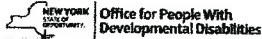
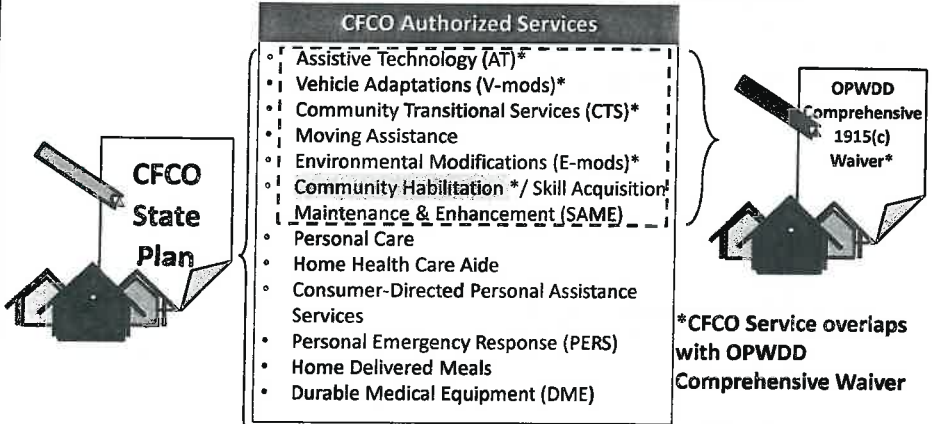
Who is eligible for CFCO?

- All Institutional Levels of Care (LOC) – in community
- Individual **Does not** live in a provider-owned or controlled residential setting
- Individual must be income eligible for Medicaid under “regular rules” (e.g., no waiving of parental income)



CFCO Services

- Many CFCO services overlap with HCBS covered under 1915(c) Waivers and will also transition to mainstream managed care

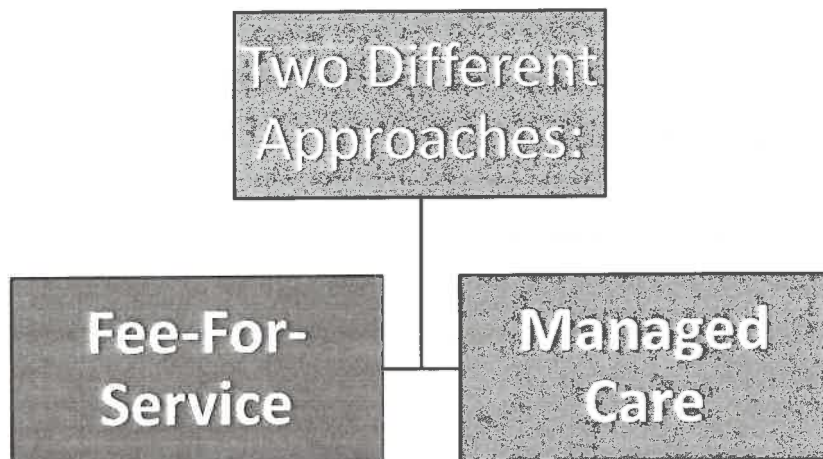


OPWDD Self Direction & CFCO

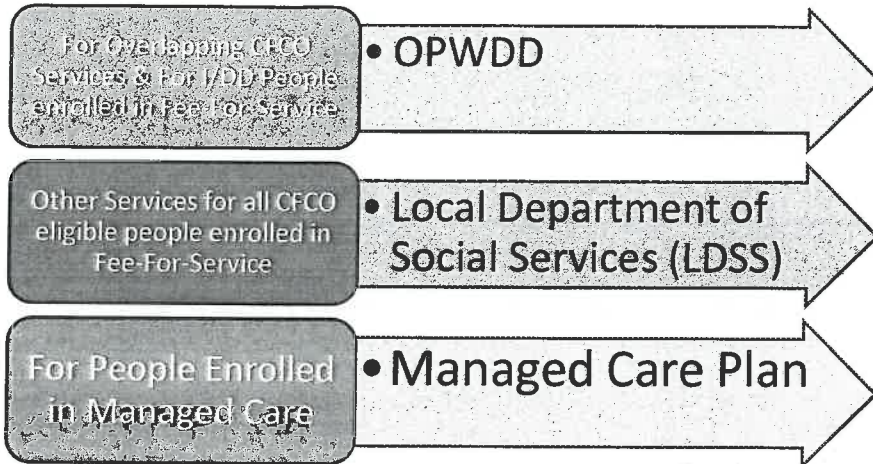
- CFCO does not include self direction with budget authority
- OPWDD individuals self-directing their Community Hab services with budget authority will continue to receive Community Hab under OPWDD 1915(c) waiver



How Will CFCO Operate?



Who Authorizes CFCO Services?




Provider Designation/ Certification

- OPWDD will continue to:
 - Certify providers serving individuals with I/DD
 - Certify Providers to deliver specific CFCO/HCBS Services
- Licensed Home Care Service Agencies (LHCSAs) and Certified Home Healthcare Agencies (CHHAs) will provide Skills Acquisition Maintenance and Enhancement (SAME) to the non-I/DD population



19

CFCO and
COMMUNITY HABILITATION



NEW YORK STATE
OFFICE OF
COMMUNITY
OFFICE for People With
Developmental Disabilities

20

Eligibility: CFCO vs. Waiver

```
graph LR; A[If I receive Community Habilitation today] --> B[If I meet CFCO eligibility I receive...]; A --> C[If I do not meet CFCO eligibility I receive...]; B --> D[Skills Acquisition Maintenance & Enhancement (SAME) Under CFCO]; C --> E[Community Habilitation under the HCBS Waiver]
```


If I receive Community Habilitation today

If I meet CFCO eligibility I receive...

Skills Acquisition Maintenance & Enhancement (SAME) Under CFCO

If I do not meet CFCO eligibility I receive...

Community Habilitation under the HCBS Waiver



NEW YORK STATE
OFFICE OF
COMMUNITY
OFFICE for People With
Developmental Disabilities

What Does This Mean for Me?

Example: My child has Medicaid because he needs HCBS services and our income was not counted during the Medicaid Application Process.

- If you receive Medicaid due to special rules, such as Parental Deeming/Family-of-One, you are **not** eligible for CFCO and your services will continue **as is** through the HCBS Waiver.

What Does This Mean for Me?

Example: I Self-Direct my services with Budget Authority.

- If you Self-Direct your HCBS Services with budget authority, you will continue to receive your Community Habilitation services **as is** through the HCBS Waiver. CFCO does **not** include self-direction **with budget authority**.

What Does This Mean for Me?

Example: I live in an Individualized Residential Alternative (IRA) and utilize Community Habilitation services.

- If you reside in an IRA, you will continue to receive your Community Habilitation services **as is** through the HCBS Waiver. You are **not** eligible for CFCO if you reside in a certified setting.



What Does This Mean for Me?

Example: I am enrolled in a Medicaid Managed Care plan, receive Community Habilitation services from an OPWDD provider and live in an IRA.

- You do **not** meet the CFCO eligibility requirements because you live in a certified setting.
- You will continue to receive your Community Habilitation services **as is** through the HCBS Waiver. Your provider will bill Medicaid.



What Does This Mean for Me?

- **Example:** I am enrolled in a Medicaid Managed Care plan, receive Community Habilitation services from an OPWDD provider and live independently in the community.
- If you meet all other CFCO eligibility requirements, you will receive Skill Acquisition Maintenance & Enhancement "SAME" under CFCO. You will work with the same provider who will work with your Plan to pay for services.



Additional Information

NYS Department of Health (DOH) CFCO
Webpage:

https://www.health.ny.gov/health_care/medicaid/redesign/community_first_choice_option.htm

For Questions:
CFCO@health.ny.gov



I/DD HEALTH HOME PROGRESS REPORT



Quality Management Oversight

- Quality Assurance and Performance Improvement Workshop held in March 2019
- CCO Technical Assistance Visits - focused on;
 - Intake / Enrollment
 - Comprehensive Assessment Process
 - I AM Completion
 - Life Plan Completion & Quality
 - Service Access and Monitoring
 - Quality Monitoring/Quality Management Program/Leadership
- Post Implementation Review
 - Based on the transition period of I/DD Health Home operations and the results of the Operational Reviews (through 12/31/2019)
 - With I/DD applicable indicators



Quality Management Oversight – Continued

- Education/Training and Communications
 - Weekly training collaboratives meetings with CCOs
 - Systemic training for Care Managers and provider agencies (Bi-weekly “Lunch and Learn” sessions)
 - Care Management E-Visory
 - Care Coordination Support Liaisons (CCSLs) established at each Developmental Disabilities Regional Office (DDRO)
 - Customer care contacts on the OPWDD website for each CCO
- Health Information Technology (HIT)
 - OPWDD enhanced and redirected resources targeted to working with CCOs on HIT implementation
 - Consultant working across CCOs to assess issues and implement system solutions
- Communication with CCOs
 - Weekly meetings with CCO executives
 - Weekly meetings individually with each CCO
 - DDROs convene meetings with CCOs
 - Plans to convene a Quality Workshop with CCOs focused on Life Plans and person-centered planning practices



QUESTIONS





MAY 9, 2019

Sign in Sheet

NAME	AFFILIATION	PHONE	EMAIL
Uaberna Robins	Day Hab Manager	917-388-9156	srobinson@life-adjustment-center.com
Carol Lincoln	ADAPT	212-683-6700 x1265	clincolne@adaptcommunitynetwork.org
RICK BAITZ	parent	646-526-8270	rick@rickbaitz.com
Paula Martinez Boone	NYLPI	212-244-4664	pmartinez-boone@nylpi.org
Tracy-Ann Adams	AHRC NYC	212-780-2579	Tracy-Ann.Adams@ahrcnyc.org
Allison McCarthy	OPWID	518-542-5579	Allison.J.McCarthy@opwida.ny.gov
David Summers	AHRC NYC	929-427-0470	david.summers@ahrcnyc.org
NICOLE PAGANO	ADAPT	212-683-6700	X1156 NPAGANO@ADAPTCOMMUNITYNETWORK.ORG
Sherllin Torres	ADAPT	212-683-6700	x1199 stores@adaptcommunitynetwork.org
Wendy DeLeon	ADAPT	212-683-6700 x1154	wdeleon@adaptcommunitynetwork.org
LYNN DECKER	ICAN/CIDNY	646-442-4188	ldecke@cidny.org
Sally Ord	Cooke School	917-443-9532	sord@cookeschool.org
Alicia Potter	The Shield Institute	212-860-8400 ext. 4108	Apotter@Shield.org
Caroline Dunn	YAI	212-273-6182	caroline.dunn@yai.org
Zhaohua (Joe) Tan	GHO	518-261-6552 ext. 2054	ztan@ghoinc.org
JESSIE BACKE	AHRC NYC	212-780-2348	jessie.backe@ahrcnyc.org
Aisha Torrence	AHRC NYC	212-780-2624	aisha.torrence@ahrcnyc.org
Elyse Ruffel	PARENT NY FAIR	917-833-4738	nyfair@stuart.com

MAY 9, 2019

NAME	AFFILIATION	PHONE	EMAIL
Celina Marin	QSAC	718-728-8476	Cmarin@qsac.com
Lore Barcelona	Sinergia	2126432840	lbarcelona@sinergiaNY.org
EMILYN RUBINSTEIN	ECDC-NYP	212 746 6175	MRUBINST@NYP.ORG
GLORIA MONTES	EPRIME	718 255 5946	gmontes@eprime.org
Susan Williams	Manhattan mothers & others	212-570-6266	Manhattanmothers@gmail.com
Belinda Stokes	Tri-County CARE	844-504-8400 x9733	b.stokes@tricitycare.org
USA Hataille	Adapt Community network	212 689-0236	lhataille@ucnyc.org
VALORIE Allston	Sheltering Arms	917 658 3267	VAllston-belle@shelteringarmsny.org
Margaret Puddington	parent	212-799-2042	margaret.puddington@gmail.com
alexandra Roth	YAI	212-273-6489	alexandra.roth@yai.org
Siddhan Hunt	MDDRO		Siddhan.Hunt@opudd.ny.gov
IVANA KATZ	OHelFAM PARENT	718 686-3489	IVANA_KATZ@ohelfam.org
Jackie Ceonzo	SNACK	917 750 1051	jceon@ad.com
Jackie Goldberg	MFSSAC	917 723 0444	jackie.geld@gmail.com
Yesenia Estrella	Esperanza	212 928-5810	yestrella@esperanzacenter.com
Olivia Goddard	MCHC	347-291-8745	ogoddard@cpofnys.org
Vanessa Nash	Cooke	212-477-1297 or 1520	Vnash@CookeSchool.org
Kathy Kelly	AHRC NYC	212 780-2724	Kathy.Kelly@AHRONYC.ORG
Michelle Barker	ELMYS special services	921 316-0958	michelle.barker@elmyspecialservices.org
Andronicus Mel	EPRIME		Amel@eprime.org
Chabuna Robinson	Life Adjustment Center	212 388-9156	SRobinson@lifeadjustmentcenter.com